

Bus Stop #101
 (Aupuni Center at Pauahi Street, Aupuni St., County Bldg)
 Routes Served: 10, 11, 101, 103, 104



Sign			Amenities					Shelter Type	Shelter Manufacturer	Boarding Area					Bus Shelter					ADA Evaluation				
Req/ White	Blue Hele-On	Own Pole	Height (in) (80-in min.)	Protrusion (in) (4-in max.)	Bench	Bench Distance (ft)	Shelter			Trash Can	Recycle	Bike Rack	Ground Surface	Length (ft), 8' min.	Width (ft), 5' min.	Run SI (slope of road)	Cross SI (2.0% max.)	Ground Surface	Length (ft), 4' min.	Width (ft), 2.5' min.	Run SI (2% max.)	Cross SI (2% max.)	ADA-compliant?	If No, Why?
					X	14					Window	Handi-hut	Paved	OK	OK	OK	OK	Concrete	OK	OK	OK	OK	Y	ADAAG = American with Disabilities Act Accessibility Guidelines PROWAG = Public Right-of-Way Accessibility Guidelines (PROWAG still pending adoption)

Bus Stop #103
 (Hilo Shopping Center South, Kilauea Avenue, across Kohala Street, OPP Hilo Shopping Center)
 Routes Served: 10, 11, 101, 103



Sign		Amenities					Shelter Type	Shelter Manufacturer	Boarding Area					Bus Shelter					ADA Evaluation				
Red/ White	Blue Hele-On	Own Pole	Height (in) (80-in min.)	Protrusion (in) (4-in max.)	Bench	Bench Distance (ft)			Shelter	Trash Can	Recycle	Bike Rack	Ground Surface	Length (ft), 8' min.	Width (ft), 5' min.	Run Sl (slope of road)	Cross Sl (2.0% max.)	Ground Surface	Length (ft), 4' min.	Width (ft), 2.5' min.	Run Sl (2% max.)	Cross Sl (2% max.)	ADA-compliant?
X	X		79	5.25							N/A												Per ADAAG 307.2 Protrusion Limits and PROWAG R402.3 Post-Mounted Objects, objects 27-80 inches above the finish surface shall overhang no more than 4 inches measured horizontally from the post.

Bus Stop #104
(W. Lanikaula @ Ululani Street)
Routes Served: 10



Sign					Amenities					Shelter Type	Shelter Manufacturer	Boarding Area				Bus Shelter				ADA Evaluation			
Red/White	Blue Hele-On	Own Pole	Height (in) (80-in min.)	Protrusion (in) (4-in max.)	Bench	Bench Distance (ft)	Shelter	Trash Can	Recycle			Bike Rack	Ground Surface	Length (ft), 8' min.	Width (ft), 5' min.	Run SI (slope of road)	Cross SI (2.0% max.)	Ground Surface	Length (ft), 4' min.	Width (ft), 2.5' min.	Run SI (2% max.)	Cross SI (2% max.)	ADA-compliant?
X	X		79	5								Gravel, Grass										N	1. Per ADAAG 810.2.1 Surface, bus stop boarding and alighting areas shall have a firm, stable surface. Per DCAB interpretive opinion 2011-02, grass is not a firm, stable surface. 2. Per ADAAG 307.2 Protrusion Limits and PROWAG R402.3 Post-Mounted Objects, objects 27-80 inches above the finish surface shall overhang no more than 4 inches measured horizontally from the post.

Bus Stop #105
 (UH Hilo Lower Campus)
 Routes Served: 10, 11, 101, 103



Sign				Amenities					Shelter Type	Shelter Manufacturer	Boarding Area					Bus Shelter				ADA Evaluation				
Red/ White	Blue Hele-On	Own Pole	Height (in) (80-in min.)	Protrusion (in) (4-in max.)	Bench	Bench Distance (ft)	Shelter	Trash Can			Recycle	Bike Rack	Ground Surface	Length (ft), 8' min.	Width (ft), 5' min.	Run Sl (slope of road)	Cross Sl (2.0% max.)	Ground Surface	Length (ft), 4' min.	Width (ft), 2.5' min.	Run Sl (2% max.)	Cross Sl (2% max.)	ADA-compliant?	If No, Why? ADAAG = American with Disabilities Act Accessibility Guidelines PROWAG = Public Right-of-Way Accessibility Guidelines (PROWAG still pending adoption)
X		X	79	11	X	14		X			CMU	Unknown	Paved	OK	OK	OK	OK	Concrete	OK	OK	OK	OK	N	Per ADAAG 307.2 Protrusion Limits and PROWAG R402.3 Post-Mounted Objects, objects 27-80 inches above the finish surface shall overhang no more than 4 inches measured horizontally from the post.

Bus Stop #106
(Waiakea High School)
Routes Served: 2, 10, 40, 101, 103



Sign					Amenities					Shelter Type	Shelter Manufacturer	Boarding Area					Bus Shelter					ADA Evaluation		
Red/ White	Blue Hele-On	Own Pole	Height (in) (80-in min.)	Protrusion (in) (4-in max.)	Bench	Bench Distance (ft)	Shelter	Trash Can	Recycle			Bike Rack	Ground Surface	Length (ft), 8' min.	Width (ft), 5' min.	Run SI (slope of road)	Cross SI (2.0% max.)	Ground Surface	Length (ft), 4' min.	Width (ft), 2.5' min.	Run SI (2% max.)	Cross SI (2% max.)	ADA-compliant?	If No, Why? ADAAG = American with Disabilities Act Accessibility Guidelines PROWAG = Public Right-of-Way Accessibility Guidelines (PROWAG still pending adoption)
X	X		86	5	X	21	X				Window	Handi Hut	Paved	OK	OK	OK	OK	Concrete	OK	OK	OK	OK	Y	

Bus Stop #107
 (Hawaii Community College East, W. Kawili St.)
 Routes Served: 10, 11, 103



Sign			Amenities					Shelter Type	Shelter Manufacturer	Boarding Area					Bus Shelter					ADA Evaluation			
Red/ White	Blue Hele-On	Own Pole	Height (in) (80-in min.)	Protrusion (in) (4-in max.)	Bench	Bench Distance (ft)	Shelter			Trash Can	Recycle	Bike Rack	Ground Surface	Length (ft), 8' min.	Width (ft), 5' min.	Run Sl (slope of road)	Cross Sl (2.0% max.)	Ground Surface	Length (ft), 4' min.	Width (ft), 2.5' min.	Run Sl (2% max.)	Cross Sl (2% max.)	ADA-compliant?
X	X	X	80	5							N/A					Grass						N	Per ADAAG 810.2.1 Surface, bus stop boarding and alighting areas shall have a firm, stable surface. Per DCAB interpretive opinion 2011-02, grass is not a firm, stable surface.

Bus Stop #108
(E. Kawili Street East)
Routes Served: 10, 11, 101, 103



Sign			Amenities				Shelter Type	Shelter Manufacturer	Boarding Area				Bus Shelter				ADA Evaluation						
Red/ White	Blue Hele-On	Own Pole	Height (in) (80-in min.)	Protrusion (in) (4-in max.)	Bench	Bench Distance (ft)			Shelter	Trash Can	Recycle	Bike Rack	Ground Surface	Length (ft), 8' min.	Width (ft), 5' min.	Run SI (slope of road)	Cross SI (2.0% max.)	Ground Surface	Length (ft), 4' min.	Width (ft), 2.5' min.	Run SI (2% max.)	Cross SI (2% max.)	ADA-compliant?
																							<p align="center">ADAAG = American with Disabilities Act Accessibility Guidelines PROWAG = Public Right-of-Way Accessibility Guidelines (PROWAG still pending adoption)</p> <p>Per ADAAG 810.2.4 Slope, perpendicular to the roadway, the slope of the bus stop boarding and alighting area shall not be steeper than 1:48 (2.08%). Since the measured cross slope exceeds 2.08%, the boarding area is not considered ADA-compliant</p>

Bus Stop #110
 (Prince Kuhio Plaza South, Ohu Ohu St.)
 Routes Served: 1, 2, 10, 40, 101, 103



Sign					Amenities					Shelter Type	Shelter Manufacturer	Boarding Area					Bus Shelter					ADA Evaluation		
Red/ White	Blue Hele-On	Own Pole	Height (in) (80-in min.)	Protrusion (in) (4-in max.)	Bench	Bench Distance (ft)	Shelter	Trash Can	Recycle			Bike Rack	Ground Surface	Length (ft), 8' min.	Width (ft), 5' min.	Run Sl (slope of road)	Cross Sl (2.0% max.)	Ground Surface	Length (ft), 4' min.	Width (ft), 2.5' min.	Run Sl (2% max.)	Cross Sl (2% max.)	ADA-compliant?	If No, Why?
X		X	85	5	X	17	X	X			Window	Unknown	Paved	OK	OK	OK	OK	Concrete	OK	OK	OK	OK	Y	ADAAG = American with Disabilities Act Accessibility Guidelines PROWAG = Public Right-of-Way Accessibility Guidelines (PROWAG still pending adoption)

Bus Stop #112
(Hilo Airport)
 Routes Served: 101



Sign					Amenities					Shelter Type	Shelter Manufacturer	Boarding Area					Bus Shelter					ADA Evaluation		
Red/ White	Blue Hele-On	Own Pole	Height (in) (80-in min.)	Protrusion (in) (4-in max.)	Bench	Bench Distance (ft)	Shelter	Trash Can	Recycle			Bike Rack	Ground Surface	Length (ft), 8' min.	Width (ft), 5' min.	Run SI (slope of road)	Cross SI (2.0% max.)	Ground Surface	Length (ft), 4' min.	Width (ft), 2.5' min.	Run SI (2% max.)	Cross SI (2% max.)	ADA-compliant?	If No, Why?
X (6)			MISC	MISC	X	7'11"					Wood/Ladder	Unknown	Paved	OK	OK	OK	OK	Concrete	OK	OK	OK	OK	Y	

ADAAG = American with Disabilities Act
 Accessibility Guidelines
 PROWAG = Public Right-of-Way Accessibility Guidelines
 (PROWAG still pending adoption)

Bus Stop #116
 (Banyan Drive, across Grand Naniloa)
 Routes Served: 101



Sign					Amenities					Shelter Type	Shelter Manufacturer	Boarding Area					Bus Shelter					ADA Evaluation		
Red/ White	Blue Hele-On	Own Pole	Height (in) (80-in min.)	Protrusion (in) (4-in max.)	Bench	Bench Distance (ft)	Shelter	Trash Can	Recycle			Bike Rack	Ground Surface	Length (ft), 8' min.	Width (ft), 5' min.	Run Sl (slope of road)	Cross Sl (2.0% max.)	Ground Surface	Length (ft), 4' min.	Width (ft), 2.5' min.	Run Sl (2% max.)	Cross Sl (2% max.)	ADA-compliant?	If No, Why?
X (2)			92	7	X	17					CMU	Unknown	Paved	OK	OK	OK	OK	Concrete	OK	OK	OK	OK	Y	
			98	11																				

ADAAG = American with Disabilities Act
 Accessibility Guidelines
 PROWAG = Public Right-of-Way Accessibility Guidelines
 (PROWAG still pending adoption)

Bus Stop #118
 (Seaside Restaurant)
 Routes Served: 101



Sign					Amenities					Shelter Type	Shelter Manufacturer	Boarding Area					Bus Shelter					ADA Evaluation	
Red/White	Blue Hele-On	Own Pole	Height (in) (80-in min.)	Protrusion (in) (4-in max.)	Bench	Bench Distance (ft)	Shelter	Trash Can	Recycle			Bike Rack	Ground Surface	Length (ft), 8' min.	Width (ft), 5' min.	Run SI (slope of road)	Cross SI (2.0% max.)	Ground Surface	Length (ft), 4' min.	Width (ft), 2.5' min.	Run SI (2% max.)	Cross SI (2% max.)	ADA-compliant?
X	X		86	5							N/A		Paved	OK	OK	0.2	6.6					N	Per ADAAG 810.2.4 Slope, perpendicular to the roadway, the slope of the bus stop boarding and alighting area shall not be steeper than 1:48 (2.08%). Since the measured cross slope exceeds 2.08%, the boarding area is not considered ADA-compliant

Bus Stop #121
 (Carlsmith Beach Park, Kalaniana'ole Ave., roadside, in front of Mauna Loa Apartments)
 Routes Served: 101



Red/ White	Sign				Amenities				Shelter Type	Shelter Manufacturer	Boarding Area				Bus Shelter				ADA-compliant?	ADA Evaluation			
	Blue Hele-On	Own Pole	Height (in) (80-in min.)	Protrusion (in) (4-in max.)	Bench	Bench Distance (ft)	Shelter	Trash Can			Recycle	Bike Rack	Ground Surface	Length (ft), 8' min.	Width (ft), 5' min.	Run Sl (slope of road)	Cross Sl (2.0% max.)	Ground Surface			Length (ft), 4' min.	Width (ft), 2.5' min.	Run Sl (2% max.)
X	X	85	5								N/A											N	Per ADAAG 810.2.4 Slope, perpendicular to the roadway, the slope of the bus stop boarding and alighting area shall not be steeper than 1:48 (2.08%). Since the measured cross slope exceeds 2.08%, the boarding area is not considered ADA-compliant

Bus Stop #123
 (UHH Pacific Aquaculture Center, Kalaniana'ole Ave., before Pua Ave.)
 Routes Served: 101



Sign					Amenities					Shelter Type	Shelter Manufacturer	Boarding Area					Bus Shelter					ADA Evaluation		
Red/ White	Blue Hele-On	Own Pole	Height (in) (80-in min.)	Protrusion (in) (4-in max.)	Bench	Bench Distance (ft)	Shelter	Trash Can	Recycle			Bike Rack	Ground Surface	Length (ft), 8' min.	Width (ft), 5' min.	Run Sl (slope of road)	Cross Sl (2.0% max.)	Ground Surface	Length (ft), 4' min.	Width (ft), 2.5' min.	Run Sl (2% max.)	Cross Sl (2% max.)	ADA compliant?	If No, Why? ADAAG = American with Disabilities Act Accessibility Guidelines PROWAG = Public Right-of-Way Accessibility Guidelines (PROWAG still pending adoption)
X	X		86	5	X	11	X				Window	Handi-hut	Paved	OK	OK	OK	OK	Concrete	OK	OK	OK	OK	Y	

Bus Stop #124
(Ocean Front Kitchen, Kalaniana'ole Ave., after Hilo Pier, front of Ocean Front Kitchen, Kumau Street)
Routes Served: 101



Sign					Amenities				Shelter Type	Shelter Manufacturer	Boarding Area				Bus Shelter				ADA Evaluation				
Red/ White	Blue Hele-On	Own Pole	Height (in) (80-in min.)	Protrusion (in) (4-in max.)	Bench	Bench Distance (ft)	Shelter	Trash Can			Recycle	Bike Rack	Ground Surface	Length (ft), 8' min.	Width (ft), 5' min.	Run Sl (slope of road)	Cross Sl (2.0% max.)	Ground Surface	Length (ft), 4' min.	Width (ft), 2.5' min.	Run Sl (2% max.)	Cross Sl (2% max.)	ADA compliant?
X	X		86	5							N/A		Paved	OK	OK	OK	OK					Y	

Bus Stop #125
(Ponds Hilo Shelter, Kalaniana'ole Ave., before Banyan Way, front of Ponds restaurant)
Routes Served: 101



Sign					Amenities				Shelter Type	Shelter Manufacturer	Boarding Area				Bus Shelter				ADA-compliant?	ADA Evaluation If No, Why? ADAAG = American with Disabilities Act Accessibility Guidelines PROWAG = Public Right-of-Way Accessibility Guidelines (PROWAG still pending adoption)				
Red/ White	Blue Hele-On	Own Pole	Height (in) (80-in min.)	Protrusion (in) (4-in max.)	Bench	Bench Distance (ft)	Shelter	Trash Can			Recycle	Bike Rack	Ground Surface	Length (ft), 8' min.	Width (ft), 5' min.	Run Sl (slope of road)	Cross Sl (2.0% max.)	Ground Surface			Length (ft), 4' min.	Width (ft), 2.5' min.	Run Sl (2% max.)	Cross Sl (2% max.)
X	X		86	5	X	13.1	X				Window	Handi-hut	Paved	OK	OK	OK	OK	Concrete	OK	OK	OK	OK	Y	

Bus Stop #127
 (Banyan Drive - Liliuokolani Gardens, Banyan DR. at Liliuokolani Park and Gardens)
 Routes Served: 101



Sign			Amenities				Shelter Type	Shelter Manufacturer	Boarding Area					Bus Shelter					ADA Evaluation					
Red/White	Blue Hele-On	Own Pole	Height (in) (80-in min.)	Protrusion (in) (4-in max.)	Bench	Bench Distance (ft)			Shelter	Trash Can	Recycle	Bike Rack	Ground Surface	Length (ft), 8' min.	Width (ft), 5' min.	Run Sl (slope of road)	Cross Sl (2.0% max.)	Ground Surface	Length (ft), 4' min.	Width (ft), 2.5' min.	Run Sl (2% max.)	Cross Sl (2% max.)	ADA-compliant?	If No, Why? ADAAG = American with Disabilities Act Accessibility Guidelines PROWAG = Public Right-of-Way Accessibility Guidelines (PROWAG still pending adoption)
X	X		91	5	X	16	X				Window	Handi-hut	Paved	OK	OK	OK	OK	Concrete	OK	OK	OK	OK	Y	

Bus Stop #129
 (Hilo Post-Office, Waiuanue Ave., roadside, in front of post office entrance)
 Routes Served: 102



Sign					Amenities			Shelter Type	Shelter Manufacturer	Boarding Area				Bus Shelter					ADA Evaluation				
Red/White	Blue Hele-On	Own Pole	Height (in) (80-in min.)	Protrusion (in) (4-in max.)	Bench	Bench Distance (ft)	Shelter			Trash Can	Recycle	Bike Rack	Ground Surface	Length (ft), 8' min.	Width (ft), 5' min.	Run SI (slope of road)	Cross SI (2.0% max.)	Ground Surface	Length (ft), 4' min.	Width (ft), 2.5' min.	Run SI (2% max.)	Cross SI (2% max.)	ADA-compliant?
X	X		86	5							N/A		Paved	OK	OK	OK	2.7					N	Per ADAAG 810.2.4 Slope, perpendicular to the roadway, the slope of the bus stop boarding and alighting area shall not be steeper than 1:48 (2.08%). Since the measured cross slope exceeds 2.08%, the boarding area is not considered ADA-compliant

Bus Stop #130
 (Hilo Library, Waianuenue Ave., roadside)
 Routes Served: 102



Sign			Amenities				Shelter Type	Shelter Manufacturer	Boarding Area				Bus Shelter				ADA-compliant?	ADA Evaluation If No, Why? ADAAG = American with Disabilities Act Accessibility Guidelines PROWAG = Public Right-of-Way Accessibility Guidelines (PROWAG still pending adoption)					
Red/ White	Blue Hele-On	Own Pole	Height (in) (80-in min.)	Protrusion (in) (4-in max.)	Bench	Bench Distance (ft)			Shelter	Trash Can	Recycle	Bike Rack	Ground Surface	Length (ft), 8' min.	Width (ft), 5' min.	Run Sl (slope of road)			Cross Sl (2.0% max.)	Ground Surface	Length (ft), 4' min.	Width (ft), 2.5' min.	Run Sl (2% max.)
X	X		86	120.5							N/A		Paved	OK	OK	OK	OK					Y	

Bus Stop #131
 (Hilo High School, Waianuenue Ave., roadside in front of school)
 Routes Served: 102



Sign			Amenities				Shelter Type	Shelter Manufacturer	Boarding Area				Bus Shelter				ADA-compliant?	ADA Evaluation If No, Why? ADAAG = American with Disabilities Act Accessibility Guidelines PROWAG = Public Right-of-Way Accessibility Guidelines (PROWAG still pending adoption)						
Red/ White	Blue Hele-On	Owln Pole	Height (in) (80-in min.)	Protrusion (in) (4-in max.)	Bench	Bench Distance (ft)			Shelter	Trash Can	Recycle	Bike Rack	Ground Surface	Length (ft), 8' min.	Width (ft), 5' min.	Run Sl (slope of road)			Cross Sl (2.0% max.)	Ground Surface	Length (ft), 4' min.	Width (ft), 2.5' min.	Run Sl (2% max.)	Cross Sl (2% max.)
X	X		86	5	X	8	X				Window	Handi-hut	Paved	OK	OK	OK	OK	Concrete	OK	OK	OK	OK	Y	

Bus Stop #132
 (Hilo High School, Waianuenue Ave., roadside, after school entrance)
 Routes Served: 102



Sign					Amenities				Shelter Type	Shelter Manufacturer	Boarding Area				Bus Shelter				ADA-compliant?	ADA Evaluation If No, Why? ADAAG = American with Disabilities Act Accessibility Guidelines PROWAG = Public Right-of-Way Accessibility Guidelines (PROWAG still pending adoption)			
Red/ White	Blue Hello-On	Own Pole	Height (in) (80-in min.)	Protrusion (in) (4-in max.)	Bench	Bench Distance (ft)	Shelter	Trash Can			Recycle	Bike Rack	Ground Surface	Length (ft), 8' min.	Width (ft), 5' min.	Run Sl (slope of road)	Cross Sl (2.0% max.)	Ground Surface			Length (ft), 4' min.	Width (ft), 2.5' min.	Run Sl (2% max.)
X	X		94	8							N/A		Paved	OK	OK	OK	OK					Y	

Bus Stop #133
(Hilo Medical Center, Waianuenu Ave., roadside, in front of medical center)
Routes Served: 102



Sign					Amenities					Shelter Type	Shelter Manufacturer	Boarding Area					Bus Shelter					ADA Evaluation		
Red/ White	Blue Hele-On	Own Pole	Height (in) (80-in min.)	Protrusion (in) (4-in max.)	Bench	Bench Distance (ft)	Shelter	Trash Can	Recycle			Bike Rack	Ground Surface	Length (ft), 8' min.	Width (ft), 5' min.	Run Sl (slope of road)	Cross Sl (2.0% max.)	Ground Surface	Length (ft), 4' min.	Width (ft), 2.5' min.	Run Sl (2% max.)	Cross Sl (2% max.)	ADA-compliant?	If No, Why? ADAAG = American with Disabilities Act Accessibility Guidelines PROWAG = Public Right-of-Way Accessibility Guidelines (PROWAG still pending adoption)
X		X	94	5	X	14	X				Window	Handi-hut	Paved	OK	OK	OK	OK	Concrete	OK	OK	OK	OK	N	Walkway around bus shelter not accessible

Bus Stop #134
(Kaiser Medical Center, Waiianuenue Ave., roadside)
Routes Served: 102



Sign			Amenities				Shelter Type	Shelter Manufacturer	Boarding Area				Bus Shelter				ADA-compliant?	ADA Evaluation If No, Why? ADAAG = American with Disabilities Act Accessibility Guidelines PROWAG = Public Right-of-Way Accessibility Guidelines (PROWAG still pending adoption)					
Red/ White	Blue Hele-On	Own Pole	Height (in) (80-in min.)	Protrusion (in) (4-in max.)	Bench	Bench Distance (ft)			Shelter	Trash Can	Recycle	Bike Rack	Ground Surface	Length (ft), 8' min.	Width (ft), 5' min.	Run Sl (slope of road)			Cross Sl (2.0% max.)	Ground Surface	Length (ft), 4' min.	Width (ft), 2.5' min.	Run Sl (2% max.)
X	X		84	5							N/A	Grass										N	Per ADAAG 810.2.1 Surface, bus stop boarding and alighting areas shall have a firm, stable surface. Per DCAB interpretive opinion 2011-02, grass is not a firm, stable surface.

Bus Stop #135
 (Ainako/Lahi Street, Ainako Ave., after right turn from Lahi St.)
 Routes Served: 102



Sign			Amenities				Shelter Type	Shelter Manufacturer	Boarding Area				Bus Shelter				ADA-compliant?	ADA Evaluation If No, Why? ADAAG = American with Disabilities Act Accessibility Guidelines PROWAG = Public Right-of-Way Accessibility Guidelines (PROWAG still pending adoption)						
Red/White	Blue Heli-On	Owain Pole	Height (in) (80-in min.)	Protrusion (in) (4-in max.)	Bench	Bench Distance (ft)			Shelter	Trash Can	Recycle	Blue Rack	Ground Surface	Length (ft), 8' min.	Width (ft), 5' min.	Run Sl (slope of road)			Cross Sl (2.0% max.)	Ground Surface	Length (ft), 4' min.	Width (ft), 2.5' min.	Run Sl (2% max.)	Cross Sl (2% max.)
X	X		85	5							N/A		Paved	OK	OK	OK	OK						Y	

Bus Stop #137
 (Ainako/Kaumana, Ainako St., before Kaumana Drive)
 Routes Served: 102



Sign			Amenities				Shelter Type	Shelter Manufacturer	Boarding Area				Bus Shelter				ADA-compliant?	ADA Evaluation If No, Why? ADAAG = American with Disabilities Act Accessibility Guidelines PROWAG = Public Right-of-Way Accessibility Guidelines (PROWAG still pending adoption)					
Red/White	Blue Hele-On	Own Pole	Height (in) (80-in min.)	Protrusion (in) (4-in max.)	Bench	Bench Distance (ft)			Shelter	Trash Can	Recycle	Bike Rack	Ground Surface	Length (ft), 8' min.	Width (ft), 5' min.	Run SI (slope of road)			Cross SI (2.0% max.)	Ground Surface	Length (ft), 4' min.	Width (ft), 2.5' min.	Run SI (2% max.)
X	X		86	5							N/A	Paved	OK	OK	OK	3.5						N	Per ADAAG 810.2.4 Slope, perpendicular to the roadway, the slope of the bus stop boarding and alighting area shall not be steeper than 1:48 (2.08%). Since the measured cross slope exceeds 2.08%, the boarding area is not considered ADA-compliant

Bus Stop #142
 (Kaumana City, Nolemana St., roadside)
 Routes Served: 102



Sign			Amenities				Shelter Type	Shelter Manufacturer	Boarding Area				Bus Shelter				ADA-compliant?	ADA Evaluation						
Red/ White	Blue Hele-On	Own Pole	Height (in) (80-in min.)	Protrusion (in) (4-in max.)	Bench	Bench Distance (ft)			Shelter	Trash Can	Recycle	Bike Rack	Ground Surface	Length (ft), 8' min.	Width (ft), 5' min.	Run Sl (slope of road)			Cross Sl (2.0% max.)	Ground Surface	Length (ft), 4' min.	Width (ft), 2.5' min.	Run Sl (2% max.)	Cross Sl (2% max.)
X	X		84	5							Paved (Cracked)												N	Per ADAAG 810.2.1 Surface, bus stop boarding and alighting areas shall have a firm, stable surface. Loose material such as cracked pavement will not meet ADA requirements.

Bus Stop #153
(Kilauea Ave., south of Kawaiiani St.)
Routes Served: TBD



Sign			Amenities				Shelter Type	Shelter Manufacturer	Boarding Area					Bus Shelter					ADA Evaluation								
Red/ White	Blue Hele-On	Own Pole	Height (in) (80-in min.)	Protrusion (in) (4-in max.)	Bench	Bench Distance (ft)			Shelter	Trash Can	Recycle	Bike Rack	Ground Surface	Length (ft), 8' min.	Width (ft), 5' min.	Run Sl (slope of road)	Cross Sl (2.0% max.)	Ground Surface	Length (ft), 4' min.	Width (ft), 2.5' min.	Run Sl (2% max.)	Cross Sl (2% max.)	ADA-compliant?	If No, Why? ADAAG = American with Disabilities Act Accessibility Guidelines PROWAG = Public Right-of-Way Accessibility Guidelines (PROWAG still pending adoption)			
X			91	11							N/A					Paved, Grass	OK	OK	2.5	2.5						N	Per ADAAG 810.2.4 Slope, perpendicular to the roadway, the slope of the bus stop boarding and alighting area shall not be steeper than 1:48 (2.08%). Since the measured cross slope exceeds 2.08%, the boarding area is not considered ADA-compliant

Bus Stop #154
(Ponahawai/Ka Waena Lapaau, Upper Ponohawai St., top of Ponohawai St., roadside across Kawaena Lapaau complex)
Routes Served: 102



Sign			Amenities				Shelter Type	Shelter Manufacturer	Boarding Area				Bus Shelter				ADA-compliant?	ADA Evaluation If No, Why? ADAAG = American with Disabilities Act Accessibility Guidelines PROWAG = Public Right-of-Way Accessibility Guidelines (PROWAG still pending adoption)					
Red/ White	Blue Hele-On	Own Pole	Height (in) (80-in min.)	Protrusion (in) (4-in max.)	Bench	Bench Distance (ft)			Shelter	Trash Can	Recycle	Bike Rack	Ground Surface	Length (ft), 8' min.	Width (ft), 5' min.	Run Sl (slope of road)			Cross Sl (2.0% max.)	Ground Surface	Length (ft), 4' min.	Width (ft), 2.5' min.	Run Sl (2% max.)
X	X		86	5							N/A					Paved, Grass						N	Per ADAAG 810.2.1 Surface, bus stop boarding and alighting areas shall have a firm, stable surface. Per DCAB interpretive opinion 2011-02, grass is not a firm, stable surface.

Bus Stop #155
(Ponahawai, Ponohawai St., before Kapiolani St. intersection)
Routes Served: 102



Sign					Amenities				Shelter Type	Shelter Manufacturer	Boarding Area				Bus Shelter				ADA-compliant?	ADA Evaluation			
Red/ White	Blue Hele-On	Own Pole	Height (in) (80-in min.)	Protrusion (in) (4-in max.)	Bench	Bench Distance (ft)	Shelter	Trash Can			Recycle	Bike Rack	Ground Surface	Length (ft), 8' min.	Width (ft), 5' min.	Run Sl (slope of road)	Cross Sl (2.0% max.)	Ground Surface			Length (ft), 4' min.	Width (ft), 2.5' min.	Run Sl (2% max.)
X	X	X	89	5							N/A	Paved	7	OK	7.9	3						N	<p>1. Per ADAAG 810.2.2 Dimensions, bus stop boarding and alighting areas shall provide a clear length of 8 feet minimum.</p> <p>2. Per ADAAG 810.2.4 Slope, perpendicular to the roadway, the slope of the bus stop boarding and alighting area shall not be steeper than 1:48 (2.08%). Since the measured cross slope exceeds 2.08%, the boarding area is not considered ADA-compliant</p>

Bus Stop #156
(Ponahawai, lower Ponohawai St., before Kinoole St., front of Central Fire Station, roadside)
Routes Served: 102



Sign				Amenities					Shelter Type	Shelter Manufacturer	Boarding Area				Bus Shelter				ADA Evaluation				
Red/ White	Blue Hele-On	Own Pole	Height (in) (80-in min.)	Protrusion (in) (4-in max.)	Bench	Bench Distance (ft)	Shelter	Trash Can			Recycle	Bike Rack	Ground Surface	Length (ft), 8' min.	Width (ft), 5' min.	Run Sl (slope of road)	Cross Sl (2.0% max.)	Ground Surface	Length (ft), 4' min.	Width (ft), 2.5' min.	Run Sl (2% max.)	Cross Sl (2% max.)	ADA-compliant?
X	X		89	7							N/A		Paved	OK	OK	5.4	2.3					N	Per ADAAG 810.2.4 Slope, perpendicular to the roadway, the slope of the bus stop boarding and alighting area shall not be steeper than 1:48 (2.08%). Since the measured cross slope exceeds 2.08%, the boarding area is not considered ADA-compliant

Bus Stop #158
 (Kilauea Ave., before E. Kahaopea St.)
 Routes Served: 103



Sign					Amenities					Shelter Type	Shelter Manufacturer	Boarding Area					Bus Shelter					ADA Evaluation	
Red/White	Blue Hele-On	Own Pole	Height (in) (80-in min.)	Protrusion (in) (4-in max.)	Bench	Bench Distance (ft)	Shelter	Trash Can	Recycle			Bike Rack	Ground Surface	Length (ft), 8' min.	Width (ft), 5' min.	Run Sl (slope of road)	Cross Sl (2.0% max.)	Ground Surface	Length (ft), 4' min.	Width (ft), 2.5' min.	Run Sl (2% max.)	Cross Sl (2% max.)	ADA-compliant?
X	X		89	5							N/A					Grass						N	Per ADAAG 810.2.1 Surface, bus stop boarding and alighting areas shall have a firm, stable surface. Per DCAB interpretive opinion 2011-02, grass is not a firm, stable surface.

Bus Stop #160
 (Kilauea Ave./Palai St.)
 Routes Served: 103



Sign					Amenities					Shelter Type	Shelter Manufacturer	Boarding Area					Bus Shelter				ADA-compliant?	ADA Evaluation	
Red/ White	Blue Hele-On	Ovin Pole	Height (in) (80-in min.)	Protrusion (in) (4-in max.)	Bench	Bench Distance (ft)	Shelter	Trash Can	Recycle			Bike Rack	Ground Surface	Length (ft), 8' min.	Width (ft), 5' min.	Run Sl (slope of road)	Cross Sl (2.0% max.)	Ground Surface	Length (ft), 4' min.	Width (ft), 2.5' min.			Run Sl (2% max.)
X	X		88	5							N/A		Grass, Brush									N	Per ADAAG 810.2.1 Surface, bus stop boarding and alighting areas shall have a firm, stable surface. Per DCAB interpretive opinion 2011-02, grass is not a firm, stable surface.

If No, Why?
 ADAAG = American with Disabilities Act
 Accessibility Guidelines
 PROWAG = Public Right-of-Way Accessibility Guidelines
 (PROWAG still pending adoption)

Bus Stop #161
(Waianuenue Avenue, makai of Laimana Street)
Routes Served: TBD



Sign			Amenities					Shelter Type	Shelter Manufacturer	Boarding Area					Bus Shelter					ADA Evaluation			
Red/ White	Blue Hele-On	Own Pole	Height (in) (80-in min.)	Protrusion (in) (4-in max.)	Bench	Bench Distance (ft)	Shelter			Trash Can	Recycle	Bike Rack	Ground Surface	Length (ft), 8' min.	Width (ft), 5' min.	Run Sl (slope of road)	Cross Sl (2.0% max.)	Ground Surface	Length (ft), 4' min.	Width (ft), 2.5' min.	Run Sl (2% max.)	Cross Sl (2% max.)	ADA-compliant?
X			89	11							N/A											Y	<p align="center">ADAAG = American with Disabilities Act Accessibility Guidelines PROWAG = Public Right-of-Way Accessibility Guidelines (PROWAG still pending adoption)</p>

Bus Stop #162
(Hilo Municipal Golf Course,
Haihai St., between Likeke St. and Laula St.)
Routes Served: 103



Sign					Amenities					Shelter Type	Shelter Manufacturer	Boarding Area					Bus Shelter					ADA Evaluation		
Red/ White	Blue Hele-On	Own Pole	Height (in) (80-in min.)	Protrusion (in) (4-in max.)	Bench	Bench Distance (ft)	Shelter	Trash Can	Recycle			Bike Rack	Ground Surface	Length (ft), 8' min.	Width (ft), 5' min.	Run Sl (slope of road)	Cross Sl (2.0% max.)	Ground Surface	Length (ft), 4' min.	Width (ft), 2.5' min.	Run Sl (2% max.)	Cross Sl (2% max.)	ADA-compliant?	If No, Why? ADAAG = American with Disabilities Act Accessibility Guidelines PROWAG = Public Right-of-Way Accessibility Guidelines (PROWAG still pending adoption)
X	X		75	5	X	18.25	X				Window	Handi-hut	Paved	OK	OK	OK	OK	Concrete	OK	OK	OK	OK	N	Per ADAAG 307.2 Protrusion Limits and PROWAG R402.3 Post-Mounted Objects, objects 27-80 inches above the finish surface shall overhang no more than 4 inches measured horizontally from the post.

Bus Stop #163
(Waianuenue Avenue, makai of Kinoole St.)
Routes Served: TBD



Sign				Amenities					Shelter Type	Shelter Manufacturer	Boarding Area					Bus Shelter					ADA Evaluation					
Red/ White	Blue Hele-On	Own Pole	Height (in) (80-in min.)	Protrusion (in) (4-in max.)	Bench	Bench Distance (ft)	Shelter	Trash Can			Recycle	Bike Rack	Ground Surface	Length (ft), 8' min.	Width (ft), 5' min.	Run SI (slope of road)	Cross SI (2.0% max.)	Ground Surface	Length (ft), 4' min.	Width (ft), 2.5' min.	Run SI (2% max.)	Cross SI (2% max.)	ADA-compliant?	If No, Why?		
X		X	85	11							N/A					Paved	OK	OK	2.7	2.9					N	Per ADAAG 810.2.4 Slope, perpendicular to the roadway, the slope of the bus stop boarding and alighting area shall not be steeper than 1:48 (2.08%). Since the measured cross slope exceeds 2.08%, the boarding area is not considered ADA-compliant

Bus Stop #164
(Waianuenue Ave., makai driveway of Hilo Intermediate)
Routes Served: TBD



Sign		Amenities					Shelter Type	Shelter Manufacturer	Boarding Area				Bus Shelter				ADA Evaluation							
Red/ White	Blue Hele-On	Own Pole	Height (in) (80-in min.)	Protrusion (in) (4-in max.)	Bench	Bench Distance (ft)			Shelter	Trash Can	Recycle	Bike Rack	Ground Surface	Length (ft), 8' min.	Width (ft), 5' min.	Run SI (slope of road)	Cross SI (2.0% max.)	Ground Surface	Length (ft), 4' min.	Width (ft), 2.5' min.	Run SI (2% max.)	Cross SI (2% max.)	ADA-compliant?	If No, Why?
X	X		88	5	X	6	X				Manufacturer	Handi-hut	Paved	OK	OK	OK	OK	Concrete	OK	OK	OK	OK	Y	<p align="center">ADAAG = American with Disabilities Act Accessibility Guidelines PROWAG = Public Right-of-Way Accessibility Guidelines (PROWAG still pending adoption)</p>

Bus Stop #168
 (Life Care Center, Kawaiiani Street)
 Routes Served: 103



Sign					Amenities					Shelter Type	Shelter Manufacturer	Boarding Area				Bus Shelter				ADA Evaluation			
Red/ White	Blue Hele-On	Own Pole	Height (in) (80-in min.)	Protrusion (in) (4-in max.)	Bench	Bench Distance (ft)	Shelter	Trash Can	Recycle			Bike Rack	Ground Surface	Length (ft), 8' min.	Width (ft), 5' min.	Run SI (slope of road)	Cross SI (2.0% max.)	Ground Surface	Length (ft), 4' min.	Width (ft), 2.5' min.	Run SI (2% max.)	Cross SI (2% max.)	ADA-compliant?
X	X		88	5							N/A											N	Per ADAAG 810.2.1 Surface, bus stop boarding and alighting areas shall have a firm, stable surface. Per DCAB interpretive opinion 2011-02, grass is not a firm, stable surface.

Bus Stop #175
 (E. Kawili St., across Hawaii Community College)
 Routes Served: 1, 10, 40, 103



Sign					Amenities					Shelter Type	Shelter Manufacturer	Boarding Area					Bus Shelter					ADA Evaluation	
Red/ White	Blue Help-On	Own Pole	Height (in) (80-in min.)	Protrusion (in) (4-in max.)	Bench	Bench Distance (ft)	Shelter	Trash Can	Recycle			Bike Rack	Ground Surface	Length (ft), 8' min.	Width (ft), 5' min.	Run Sl (slope of road)	Cross Sl (2.0% max.)	Ground Surface	Length (ft), 4' min.	Width (ft), 2.5' min.	Run Sl (2% max.)	Cross Sl (2% max.)	ADA-compliant?
X	X		89	11							N/A		Grass									N	Per ADAAG 810.2.1 Surface, bus stop boarding and alighting areas shall have a firm, stable surface. Per DCAB interpretive opinion 2011-02, grass is not a firm, stable surface.

ADAAG = American with Disabilities Act
 Accessibility Guidelines
 PROWAG = Public Right-of-Way Accessibility Guidelines
 (PROWAG still pending adoption)

Bus Stop #177
 (Kapiolani St. at Holy Apostale Church)
 Routes Served: 1, 10, 40, 103



Sign					Amenities					Shelter Type	Shelter Manufacturer	Boarding Area					Bus Shelter					ADA Evaluation				
Red/ White	Blue Hele-On	Own Pole	Height (in) (80-in min.)	Protrusion (in) (4-in max.)	Bench	Bench Distance (ft)	Shelter	Trash Can	Recycle			Bike Rack	Ground Surface	Length (ft), 8' min.	Width (ft), 5' min.	Run Sl (slope of road)	Cross Sl (2.0% max.)	Ground Surface	Length (ft), 4' min.	Width (ft), 2.5' min.	Run Sl (2% max.)	Cross Sl (2% max.)	ADA-compliant?	If No, Why?		
X		X	79	7							N/A					Paved	OK	OK	0.2	3.6					N	1. Per ADAAG 810.2.4 Slope, perpendicular to the roadway, the slope of the bus stop boarding and alighting area shall not be steeper than 1:48 (2.08%). Since the measured cross slope exceeds 2.08%, the boarding area is not considered ADA-compliant. 2. Per ADAAG 307.2 Protrusion Limits and PROWAG R402.3 Post-Mounted Objects, objects 27-80 inches above the finish surface shall overhang no more than 4 inches measured horizontally from the post.

Bus Stop #179
(Lanikaula East, front of Hale Hoaloha Apartments)
Routes Served: 1, 10, 40, 103



Sign			Amenities					Shelter Type	Shelter Manufacturer	Boarding Area				Bus Shelter				ADA Evaluation						
Red/ White	Blue Hele-On	Own Pole	Height (in) (80-in min.)	Protrusion (in) (4-in max.)	Bench	Bench Distance (ft)	Shelter			Trash Can	Recycle	Bike Rack	Ground Surface	Length (ft), 8' min.	Width (ft), 5' min.	Run Sl (slope of road)	Cross Sl (2.0% max.)	Ground Surface	Length (ft), 4' min.	Width (ft), 2.5' min.	Run Sl (2% max.)	Cross Sl (2% max.)	ADA-compliant?	If No, Why? ADAAG = American with Disabilities Act Accessibility Guidelines PROWAG = Public Right-of-Way Accessibility Guidelines (PROWAG still pending adoption)
X (2)			99	11			X				CMU	Unknown	Paved	OK	OK	OK	OK	Concrete	OK	OK	OK	OK	Y	
			100	11																				

Bus Stop #180
 (Kilauea Ave., in front of Hilo Shopping Center)
 Routes Served: 1, 10, 40, 103



Sign					Amenities					Shelter Type	Shelter Manufacturer	Boarding Area					Bus Shelter					ADA Evaluation	
Red/ White	Blue Hele-On	Ovrv Pole	Height (in) (80-in min.)	Protrusion (in) (4-in max.)	Bench	Bench Distance (ft)	Shelter	Trash Can	Recycle			Bike Rack	Ground Surface	Length (ft), 8' min.	Width (ft), 5' min.	Run Sl (slope of road)	Cross Sl (2.0% max.)	Ground Surface	Length (ft), 4' min.	Width (ft), 2.5' min.	Run Sl (2% max.)	Cross Sl (2% max.)	ADA-compliant?
X	X		79	5							N/A		Paved	OK	OK	OK	OK					N	Per ADAAG 307.2 Protrusion Limits and PROWAG R402.3 Post-Mounted Objects, objects 27-80 inches above the finish surface shall overhang no more than 4 inches measured horizontally from the post.

Bus Stop #181
(Mohouli Street, mauka of Kilauea Ave.)
Routes Served: 1, 10, 40, 103



Sign			Amenities				Shelter Type	Shelter Manufacturer	Boarding Area					Bus Shelter					ADA Evaluation				
Red/ White	Blue Hele-On	Own Pole	Height (in) (80-in min.)	Protrusion (in) (4-in max.)	Bench	Bench Distance (ft)			Shelter	Trash Can	Recycle	Bike Rack	Ground Surface	Length (ft), 8' min.	Width (ft), 5' min.	Run SI (slope of road)	Cross SI (2.0% max.)	Ground Surface	Length (ft), 4' min.	Width (ft), 2.5' min.	Run SI (2% max.)	Cross SI (2% max.)	ADA-compliant?
X			89	10.5							Paved	OK	OK	OK	OK							Y	ADAAG = American with Disabilities Act Accessibility Guidelines PROWAG = Public Right-of-Way Accessibility Guidelines (PROWAG still pending adoption)

Bus Stop #182
 (Shipman Street)
 Routes Served: TBD



Sign		Amenities					Shelter Type	Shelter Manufacturer	Boarding Area				Bus Shelter				ADA-compliant?	ADA Evaluation If No, Why? ADAAG = American with Disabilities Act Accessibility Guidelines PROWAG = Public Right-of-Way Accessibility Guidelines (PROWAG still pending adoption)					
Red/White	Blue Hele-On	Own Pole	Height (in) (80-in min.)	Protrusion (in) (4-in max.)	Bench	Bench Distance (ft)			Shelter	Trash Can	Recycle	Bike Rack	Ground Surface	Length (ft), 8' min.	Width (ft), 5' min.	Run SI (slope of road)			Cross SI (2.0% max.)	Ground Surface	Length (ft), 4' min.	Width (ft), 2.5' min.	Run SI (2% max.)
X		X	89	5							N/A	Paved	5	OK	0.8	2.3						N	1. Per ADAAG 810.2.2 Dimensions, bus stop boarding and alighting areas shall provide a clear length of 8 feet minimum. 2. Per ADAAG 810.2.4 Slope, perpendicular to the roadway, the slope of the bus stop boarding and alighting area shall not be steeper than 1:48 (2.08%). Since the measured cross slope exceeds 2.08%, the boarding area is not considered ADA-compliant

Bus Stop #184
 (St. Joseph School Gym)
 Routes Served: TBD



Sign			Amenities					Shelter Type	Shelter Manufacturer	Boarding Area					Bus Shelter					ADA Evaluation							
Red/White	Blue Hele-On	Own Pole	Height (in) (80-in min.)	Protrusion (in) (4-in max.)	Bench	Bench Distance (ft)	Shelter			Trash Can	Recycle	Bike Rack	Ground Surface	Length (ft), 8' min.	Width (ft), 5' min.	Run Sl (slope of road)	Cross Sl (2.0% max.)	Ground Surface	Length (ft), 4' min.	Width (ft), 2.5' min.	Run Sl (2% max.)	Cross Sl (2% max.)	ADA-compliant?	If No, Why?			
X (2)		X	86	5							N/A					Paved	6	OK	5.0	3.2						N	Per ADAAG 810.2.4 Slope, perpendicular to the roadway, the slope of the bus stop boarding and alighting area shall not be steeper than 1:48 (2.08%). Since the measured cross slope exceeds 2.08%, the boarding area is not considered ADA-compliant.

Bus Stop #204
 (Proposed, Mohouli & Kapiolani)
 Routes Served: TBD



Sign			Amenities				Shelter Type	Shelter Manufacturer	Boarding Area					Bus Shelter					ADA Evaluation				
Red/ White	Blue Hele-On	Own Pole	Height (in) (80-in min.)	Protrusion (in) (4-in max.)	Bench	Bench Distance (ft)			Shelter	Trash Can	Recycle	Bike Rack	Ground Surface	Length (ft), 8' min.	Width (ft), 5' min.	Run Sl (slope of road)	Cross Sl (2.0% max.)	Ground Surface	Length (ft), 4' min.	Width (ft), 2.5' min.	Run Sl (2% max.)	Cross Sl (2% max.)	ADA-compliant?
																							Per ADAAG 810.2.2 Dimensions, bus stop boarding and alighting areas shall provide a clear length of 8 feet minimum.

Bus Stop #206
 (Pepeekeo Housing, Andrade Rd, Kulaimano Apartments)
 Routes Served: 1, 2, 60



Sign					Amenities					Shelter Type	Shelter Manufacturer	Boarding Area				Bus Shelter				ADA Evaluation			
Red/ White	Blue Hele-On	Own Pole	Height (in) (80-in min.)	Protrusion (in) (4-in max.)	Bench	Bench Distance (ft)	Shelter	Trash Can	Recycle			Bike Rack	Ground Surface	Length (ft), 8' min.	Width (ft), 5' min.	Run Sl (slope of road)	Cross Sl (2.0% max.)	Ground Surface	Length (ft), 4' min.	Width (ft), 2.5' min.	Run Sl (2% max.)	Cross Sl (2% max.)	ADA-compliant?
					X	15	X				Wood/Ladder, CMU	Unknown	Paved, Grass				Concrete	3		OK	OK	N	1. Per ADAAG 810.3 Bus Shelters, shelter shall provide a minimum clear floor or ground space 2.5 feet wide by 4 foot long, entirely within the shelter. 2. There is a landscape strip between the curb and sidewalk. Per ADAAG 810.2.1 Surface, bus stop boarding and alighting areas shall have a firm, stable surface. Per DCAB interpretive opinion 2011-02, grass is not a firm, stable surface.

Bus Stop #206
 (Proposed, County Office of Aging, Kinoole & Wailoa St.)
 Routes Served: TBD



Sign		Amenities					Shelter Type	Shelter Manufacturer	Boarding Area				Bus Shelter				ADA-compliant?	ADA Evaluation If No, Why? ADAAG = American with Disabilities Act Accessibility Guidelines PROWAG = Public Right-of-Way Accessibility Guidelines (PROWAG still pending adoption)					
Red/ White	Blue Hele-On	Own Pole	Height (in) (80-in min.)	Protrusion (in) (4-in max.)	Bench	Bench Distance (ft)			Shelter	Trash Can	Recycle	Bike Rack	Ground Surface	Length (ft), 8' min.	Width (ft), 5' min.	Run SI (slope of road)			Cross SI (2.0% max.)	Ground Surface	Length (ft), 4' min.	Width (ft), 2.5' min.	Run SI (2% max.)
											N/A		Paved	OK	OK	OK	OK					Y	

Bus Stop #304
 (Laupahoehoe, Hwy 19, Laupahoehoe/Papaaloo before overpass, outbound)
 Routes Served: 1, 60, 80



Sign					Amenities					Shelter Type	Shelter Manufacturer	Boarding Area				Bus Shelter				ADA Evaluation				
Red/ White	Blue Hele-On	Own Pole	Height (in) (80-in min.)	Protrusion (in) (4-in max.)	Bench	Bench Distance (ft)	Shelter	Trash Can	Recycle			Bike Rack	Ground Surface	Length (ft), 8' min.	Width (ft), 5' min.	Run Sl (slope of road)	Cross Sl (2.0% max.)	Ground Surface	Length (ft), 4' min.	Width (ft), 2.5' min.	Run Sl (2% max.)	Cross Sl (2% max.)	ADA-compliant?	If No, Why? ADAAG = American with Disabilities Act Accessibility Guidelines PROWAG = Public Right-of-Way Accessibility Guidelines (PROWAG still pending adoption)
X	X		82	5	X	21'9"	X				Window	Handi-hut	Paved	OK	OK	OK	OK	Concrete	OK	OK	OK	OK	Y	

Bus Stop #307
(Ookala, Hwy 19, before Old Mamalahoa Hwy)
Routes Served: 1, 60, 80



Sign					Amenities					Shelter Type	Shelter Manufacturer	Boarding Area					Bus Shelter					ADA Evaluation		
Red/ White	Blue Hele-On	Own Pole	Height (in) (80-in min.)	Protrusion (in) (4-in max.)	Bench	Bench Distance (ft)	Shelter	Trash Can	Recycle			Bike Rack	Ground Surface	Length (ft), 8' min.	Width (ft), 5' min.	Run Sl (slope of road)	Cross Sl (2.0% max.)	Ground Surface	Length (ft), 4' min.	Width (ft), 2.5' min.	Run Sl (2% max.)	Cross Sl (2% max.)	ADA-compliant?	If No, Why?
					X	22	X				Wood/Ladder, CMU	Unknown	Paved	OK	OK	1.0	2.5	Concrete	OK	OK	OK	OK	N	Per ADAAG 810.2.4 Slope, perpendicular to the roadway, the slope of the bus stop boarding and alighting area shall not be steeper than 1:48 (2.08%). Since the measured cross slope exceeds 2.08%, the boarding area is not considered ADA-compliant.

Bus Stop #308
(Paauilo, Hwy 19, across post office & general store, before overpass)
Routes Served: 1, 60, 80



Sign					Amenities					Shelter Type	Shelter Manufacturer	Boarding Area					Bus Shelter					ADA Evaluation		
Red/ White	Blue Hele-On	Own Pole	Height (in) (80-in min.)	Protrusion (in) (4-in max.)	Bench	Bench Distance (ft)	Shelter	Trash Can	Recycle			Bike Rack	Ground Surface	Length (ft), 8' min.	Width (ft), 5' min.	Run Sl (slope of road)	Cross Sl (2.0% max.)	Ground Surface	Length (ft), 4' min.	Width (ft), 2.5' min.	Run Sl (2% max.)	Cross Sl (2% max.)	ADA-compliant?	If No, Why? ADAAG = American with Disabilities Act Accessibility Guidelines PROWAG = Public Right-of-Way Accessibility Guidelines (PROWAG still pending adoption)
					X	21	X				Window	Handi-hut	Paved	OK	OK	OK	OK	Concrete	OK	OK	OK	OK	Y	

Bus Stop #309
 (Honokaa Hospital, Plumeria St.)
 Routes Served: 1, 60, 76, 80



Sign					Amenities					Shelter Type	Shelter Manufacturer	Boarding Area					Bus Shelter					ADA Evaluation		
Red/ White	Blue Hele-On	Own Pole	Height (in) (80-in min.)	Protrusion (in) (4-in max.)	Bench	Bench Distance (ft)	Shelter	Trash Can	Recycle			Bike Rack	Ground Surface	Length (ft), 8' min.	Width (ft), 5' min.	Run SI (slope of road)	Cross SI (2.0% max.)	Ground Surface	Length (ft), 4' min.	Width (ft), 2.5' min.	Run SI (2% max.)	Cross SI (2% max.)	ADA-compliant?	If No, Why? ADAAG = American with Disabilities Act Accessibility Guidelines PROWAG = Public Right-of-Way Accessibility Guidelines (PROWAG still pending adoption)
X	X		80	5	X	14					Window	Handi-hut	Paved	OK	OK	OK	OK	Concrete	OK	OK	OK	OK	Y	

Bus Stop #400
(Waimea - Lakeland, Hwy 19, Old Mamalahoa/Mud Lane Intersection)
Routes Served: 1, 60, 76, 80, 301



Sign		Amenities					Shelter Type	Shelter Manufacturer	Boarding Area				Bus Shelter				ADA Evaluation							
Red/ White	Blue Hele-On	Own Pole	Height (in) (80-in min.)	Protrusion (in) (4-in max.)	Bench	Bench Distance (ft)			Shelter	Trash Can	Recycle	Bike Rack	Ground Surface	Length (ft), 8' min.	Width (ft), 5' min.	Run Sl (slope of road)	Cross Sl (2.0% max.)	Ground Surface	Length (ft), 4' min.	Width (ft), 2.5' min.	Run Sl (2% max.)	Cross Sl (2% max.)	ADA-compliant?	If No, Why? ADAAG = American with Disabilities Act Accessibility Guidelines PROWAG = Public Right-of-Way Accessibility Guidelines (PROWAG still pending adoption)
X		X	83	5	X	19' 6"	X				Window/Clear	Handi-hut	Paved	OK	OK	OK	OK	Concrete	OK	OK	OK	OK	Y	

Bus Stop #410
 (Waimea Park, Hwy 19, farside Lindsey Rd., Waimea Park roadside)
 Routes Served: 75, 80, 301



Sign					Amenities					Shelter Type	Shelter Manufacturer	Boarding Area				Bus Shelter				ADA Evaluation			
Red/ White	Blue-Hele-On	Own Pole	Height (in) (80-in min.)	Protrusion (in) (4-in max.)	Bench	Bench Distance (ft)	Shelter	Trash Can	Recycle			Bike Rack	Ground Surface	Length (ft), 8' min.	Width (ft), 5' min.	Run Sl (slope of road)	Cross Sl (2.0% max.)	Ground Surface	Length (ft), 4' min.	Width (ft), 2.5' min.	Run Sl (2% max.)	Cross Sl (2% max.)	ADA-compliant?
X	X		86	5	X	19'9"	X				Window	Handi-hut	Paved	OK	OK	OK	OK					Y	

Bus Stop #412
(Waimea - Hawaiian Style Cafe, Hwy 19, nearside Opelo Rd., front of Hawaiian Style Cafe)
Routes Served: 75, 301



Sign			Amenities				Shelter Type	Shelter Manufacturer	Boarding Area					Bus Shelter					ADA Evaluation					
Red/ White	Blue Hele-On	Own Pole	Height (in) (80-in min.)	Protrusion (in) (4-in max.)	Bench	Bench Distance (ft)			Shelter	Trash Can	Recycle	Bike Rack	Ground Surface	Length (ft), 8' min.	Width (ft), 5' min.	Run Sl (slope of road)	Cross Sl (2.0% max.)	Ground Surface	Length (ft), 4' min.	Width (ft), 2.5' min.	Run Sl (2% max.)	Cross Sl (2% max.)	ADA-compliant?	If No, Why?
							N/A				Paved	OK	OK	OK	OK							Y		

ADAAG = American with Disabilities Act
Accessibility Guidelines
PROWAG = Public Right-of-Way Accessibility Guidelines
(PROWAG still pending adoption)

Bus Stop #422
(Waimea - Pukalani Road, Pukalani Road)
Routes Served: 1, 60, 75, 76, 80, 301



Sign					Amenities					Shelter Type	Shelter Manufacturer	Boarding Area					Bus Shelter					ADA Evaluation		
Red/ White	Blue Hele-On	Own Pole	Height (in) (80-in min.)	Protrusion (in) (4-in max.)	Bench	Bench Distance (ft)	Shelter	Trash Can	Recycle			Bike Rack	Ground Surface	Length (ft), 8' min.	Width (ft), 5' min.	Run SI (slope of road)	Cross SI (2.0% max.)	Ground Surface	Length (ft), 4' min.	Width (ft), 2.5' min.	Run SI (2% max.)	Cross SI (2% max.)	ADA-compliant?	If No, Why?
					X	4'8"	X	X			Window	Handi-hut	Paved	OK	OK	OK	OK	Concrete	OK	OK	OK	OK	Y	<p align="center">ADAAG = American with Disabilities Act Accessibility Guidelines PROWAG = Public Right-of-Way Accessibility Guidelines (PROWAG still pending adoption)</p>

Bus Stop #429
 (Waimea Shell Gas, Highway 19 at Lindsey Road)
 Routes Served: 1, 75



Sign					Amenities					Shelter Type	Shelter Manufacturer	Boarding Area				Bus Shelter				ADA-compliant?	ADA Evaluation			
Red/ White	Blue Hele-On	Own Pole	Height (in) (80-in min.)	Protrusion (in) (4-in max.)	Bench	Bench Distance (ft)	Shelter	Trash Can	Recycle			Bike Rack	Ground Surface	Length (ft), 8' min.	Width (ft), 5' min.	Run Sl (slope of road)	Cross Sl (2.0% max.)	Ground Surface	Length (ft), 4' min.			Width (ft), 2.5' min.	Run Sl (2% max.)	Cross Sl (2% max.)
X	X		85	5	X	6'3"	X				Window	Handi-hut	Paved	OK	OK	OK	OK	Concrete	OK	OK	OK	OK	Y	<p align="center">If No, Why?</p> <p align="center">ADAAG = American with Disabilities Act Accessibility Guidelines PROWAG = Public Right-of-Way Accessibility Guidelines (PROWAG still pending adoption)</p>

Bus Stop #449
 (Waikoloa Village, Waikoloa Road)
 Routes Served: 2, 75, 76



Sign		Amenities				Shelter Type	Shelter Manufacturer	Boarding Area				Bus Shelter				ADA Evaluation								
Red/ White	Blue Hele-On	Own Pole	Height (in) (80-in min.)	Protrusion (in) (4-in max.)	Bench			Bench Distance (ft)	Shelter	Trash Can	Recycle	Bike Rack	Ground Surface	Length (ft), 8' min.	Width (ft), 5' min.	Run Sl (slope of road)	Cross Sl (2.0% max.)	Ground Surface	Length (ft), 4' min.	Width (ft), 2.5' min.	Run Sl (2% max.)	Cross Sl (2% max.)	ADA-compliant?	If No, Why? ADAAG = American with Disabilities Act Accessibility Guidelines PROWAG = Public Right-of-Way Accessibility Guidelines (PROWAG still pending adoption)
	X		101	2	X	8'2"	X				Window	Handi-hut	Paved	OK	OK	OK	OK	Concrete	OK	OK	OK	OK	Y	

Bus Stop #452
 (Mauna Kea Beach Resort, Rockefeller Road to Mauna Kea Beach Drive)
 Routes Served: 70, 80, 90



Sign				Amenities					Shelter Type	Shelter Manufacturer	Boarding Area				Bus Shelter				ADA Evaluation					
Red/ White	Blue Hele-On	Own Pole	Height (in) (80-in min.)	Protrusion (in) (4-in max.)	Bench	Bench Distance (ft)	Shelter	Trash Can			Recycle	Bike Rack	Ground Surface	Length (ft), 8' min.	Width (ft), 5' min.	Run Sl (slope of road)	Cross Sl (2.0% max.)	Ground Surface	Length (ft), 4' min.	Width (ft), 2.5' min.	Run Sl (2% max.)	Cross Sl (2% max.)	ADA-compliant?	If No, Why? ADAAG = American with Disabilities Act Accessibility Guidelines PROWAG = Public Right-of-Way Accessibility Guidelines (PROWAG still pending adoption)
					X	6'2"	X	X			Wood/Ladder	Unknown	Paved	OK	OK	OK	OK	Asphalt	OK	OK	OK	OK	Y	

Bus Stop #453
 (Hapuna Prince, Kau Na Oa Drive)
 Routes Served: 70, 80, 90



Sign					Amenities					Shelter Type	Shelter Manufacturer	Boarding Area				Bus Shelter				ADA Evaluation				
Red/ White	Blue Hele-On	Own Pole	Height (in) (80-in min.)	Protrusion (in) (4-in max.)	Bench	Bench Distance (ft)	Shelter	Trash Can	Recycle			Bike Rack	Ground Surface	Length (ft), 8' min.	Width (ft), 5' min.	Run SI (slope of road)	Cross SI (2.0% max.)	Ground Surface	Length (ft), 4' min.	Width (ft), 2.5' min.	Run SI (2% max.)	Cross SI (2% max.)	ADA-compliant?	If No, Why? ADAAG = American with Disabilities Act Accessibility Guidelines PROWAG = Public Right-of-Way Accessibility Guidelines (PROWAG still pending adoption)
					X		X				Tent	Unknown	Paved, Wood Chips	OK	OK	8.5	3.0	Wood Chips	OK	OK	8.7	3.0	N	Per ADAAG 810.2.1 Surface, bus stop boarding and alighting areas shall have a firm, stable surface. Loose material such as mulch will not meet ADA requirements.

Bus Stop #456
 (Orchid at Mauna Lani, North Kahiku Drive)
 Routes Served: 70, 80, 90



Sign					Amenities					Shelter Type	Shelter Manufacturer	Boarding Area				Bus Shelter				ADA Evaluation				
Red/ White	Blue Hele-On	Own Pole	Height (in) (80-in min.)	Protrusion (in) (4-in max.)	Bench	Bench Distance (ft)	Shelter	Trash Can	Recycle			Bike Rack	Ground Surface	Length (ft), 8' min.	Width (ft), 5' min.	Run Sl (slope of road)	Cross Sl (2.0% max.)	Ground Surface	Length (ft), 4' min.	Width (ft), 2.5' min.	Run Sl (2% max.)	Cross Sl (2% max.)	ADA-compliant?	If No, Why? ADAAG = American with Disabilities Act Accessibility Guidelines PROWAG = Public Right-of-Way Accessibility Guidelines (PROWAG still pending adoption)
					X		X	X			Tent	Unknown	Paved	OK	OK	5.2	3.1	Asphalt	OK	OK	OK	OK	Y	

Bus Stop #462
(Hilton Waikoloa, employee entrance)
Routes Served: 2, 70, 75, 80, 90



Sign			Amenities					Shelter Type	Shelter Manufacturer	Boarding Area					Bus Shelter					ADA Evaluation			
Red/ White	Blue Hele-On	Own Pole	Height (in) (80-in min.)	Protrusion (in) (4-in max.)	Bench	Bench Distance (ft)	Shelter			Trash Can	Recycle	Bike Rack	Ground Surface	Length (ft), 8' min.	Width (ft), 5' min.	Run SI (slope of road)	Cross SI (2.0% max.)	Ground Surface	Length (ft), 4' min.	Width (ft), 2.5' min.	Run SI (2% max.)	Cross SI (2% max.)	ADA-compliant?
		X			X	23		X			N/A												Per ADAAG 810.2.4 Slope, perpendicular to the roadway, the slope of the bus stop boarding and alighting area shall not be steeper than 1:48 (2.08%). Since the measured cross slope exceeds 2.08%, the boarding area is not considered ADA-compliant.

Bus Stop #506
 (Kapaau, Akoni Pule Highway)
 Routes Served: 70, 75



Sign					Amenities					Shelter Type	Shelter Manufacturer	Boarding Area					Bus Shelter					ADA Evaluation		
Red/ White	Blue Hele-On	Own Pole	Height (in) (80-in min.)	Protrusion (in) (4-in max.)	Bench	Bench Distance (ft)	Shelter	Trash Can	Recycle			Bike Rack	Ground Surface	Length (ft), 8' min.	Width (ft), 5' min.	Run SI (slope of road)	Cross SI (2.0% max.)	Ground Surface	Length (ft), 4' min.	Width (ft), 2.5' min.	Run SI (2% max.)	Cross SI (2% max.)	ADA-compliant?	If No, Why? ADAAG = American with Disabilities Act Accessibility Guidelines PROWAG = Public Right-of-Way Accessibility Guidelines (PROWAG still pending adoption)
X		X	101	5	X	13	X				Window	Handi-Hut	Conc	OK	OK	OK	OK	Concrete	OK	OK	OK	OK	Y	

Bus Stop #604
 (Keahuolu (Kona) Courthouse, Kamakaeha Avenue)
 Routes Served: 1, 202, 203, 204



Sign					Amenities					Shelter Type	Shelter Manufacturer	Boarding Area				Bus Shelter				ADA Evaluation				
Red/ White	Blue Hele-On	Own Pole	Height (in) (80-in min.)	Protrusion (in) (4-in max.)	Bench	Bench Distance (ft)	Shelter	Trash Can	Recycle			Bike Rack	Ground Surface	Length (ft), 8' min.	Width (ft), 5' min.	Run SI (slope of road)	Cross SI (2.0% max.)	Ground Surface	Length (ft), 4' min.	Width (ft), 2.5' min.	Run SI (2% max.)	Cross SI (2% max.)	ADA-compliant?	If No, Why?
X		X	86	10.5	X	6.2	X				Wood/Ladder	Unknown	Paved	OK	OK	OK	OK	Concrete	OK	OK	OK	OK	Y	

ADAAG = American with Disabilities Act
 Accessibility Guidelines
 PROWAG = Public Right-of-Way Accessibility Guidelines
 (PROWAG still pending adoption)

Bus Stop #609
(Kona Commons/Cookies Clothing Company)
Routes Served: 201



Sign					Amenities				Shelter Type	Shelter Manufacturer	Boarding Area					Bus Shelter					ADA Evaluation			
Red/ White	Blue Hele-On	Own Pole	Height (in) (80-in min.)	Protrusion (in) (4-in max.)	Bench	Bench Distance (ft)	Shelter	Trash Can			Recycle	Bike Rack	Ground Surface	Length (ft), 8' min.	Width (ft), 5' min.	Run SI (slope of road)	Cross SI (2.0% max.)	Ground Surface	Length (ft), 4' min.	Width (ft), 2.5' min.	Run SI (2% max.)	Cross SI (2% max.)	ADA-compliant?	If No, Why?
		X	54	1	X		X	X			Wood/Ladder	Unknown	Paved	OK	OK	OK	OK	Concrete	OK	OK	OK	OK	Y	

ADAAG = American with Disabilities Act
Accessibility Guidelines
PROWAG = Public Right-of-Way Accessibility Guidelines
(PROWAG still pending adoption)

Bus Stop #610
 (Kaiser Permanente, Honokohau Street)
 Routes Served: 202



Sign		Amenities				Shelter Type	Shelter Manufacturer	Boarding Area				Bus Shelter				ADA-compliant?	ADA Evaluation If No, Why? ADAAG = American with Disabilities Act Accessibility Guidelines PROWAG = Public Right-of-Way Accessibility Guidelines (PROWAG still pending adoption)							
Red/ White	Blue Hele-On	Own Pole	Height (in) (80-in min.)	Protrusion (in) (4-in max.)	Bench			Bench Distance (ft)	Shelter	Trash Can	Recycle	Bike Rack	Ground Surface	Length (ft), 8' min.	Width (ft), 5' min.			Run SI (slope of road)	Cross SI (2.0% max.)	Ground Surface	Length (ft), 4' min.	Width (ft), 2.5' min.	Run SI (2% max.)	Cross SI (2% max.)
X	X	X	84	5	X	12	X				Window	Handi-hut	Paved	OK	OK	OK	OK	Concrete	OK	OK	OK	OK	Y	

Bus Stop #612
(Lokahi Apartments, Kakahiaka Street)
Routes Served: 202, 203



Sign					Amenities					Shelter Type	Shelter Manufacturer	Boarding Area					Bus Shelter					ADA Evaluation		
Red/White	Blue Hele-On	Own Pole	Height (in) (80-in min.)	Protrusion (in) (4-in max.)	Bench	Bench Distance (ft)	Shelter	Trash Can	Recycle			Bike Rack	Ground Surface	Length (ft), 8' min.	Width (ft), 5' min.	Run Sl (slope of road)	Cross Sl (2.0% max.)	Ground Surface	Length (ft), 4' min.	Width (ft), 2.5' min.	Run Sl (2% max.)	Cross Sl (2% max.)	ADA-compliant?	If No, Why?
					X	15	X				Wood/Ladder	Unknown	Paved	OK	OK	OK	OK	Concrete	OK	OK	OK	OK	Y	Move bench so clear space is within shelter

Bus Stop #614
 (Ulu Wini Housing, Hina Lani Street)
 Routes Served: 202



Sign					Amenities					Shelter Type	Shelter Manufacturer	Boarding Area					Bus Shelter					ADA Evaluation		
Red/White	Blue Hele-On	Own Pole	Height (in) (80-in min.)	Protrusion (in) (4-in max.)	Bench	Bench Distance (ft)	Shelter	Trash Can	Recycle			Bike Rack	Ground Surface	Length (ft), 8' min.	Width (ft), 5' min.	Run SI (slope of road)	Cross SI (2.0% max.)	Ground Surface	Length (ft), 4' min.	Width (ft), 2.5' min.	Run SI (2% max.)	Cross SI (2% max.)	ADA-compliant?	If No, Why?
X			109	12	X	23.5	X				Wood/Ladder	Unknown	Paved	OK	OK	OK	OK	Concrete	OK	OK	OK	OK	Y	

ADAAG = American with Disabilities Act
 Accessibility Guidelines
 PROWAG = Public Right-of-Way Accessibility Guidelines
 (PROWAG still pending adoption)

Bus Stop #621
(Matsuyama Store North, Māmalahoa Highway, Highway 190)
Routes Served: 1, 76, 203



Sign		Amenities					Shelter Type	Shelter Manufacturer	Boarding Area					Bus Shelter				ADA Evaluation						
Red/White	Blue Hele-On	Own Pole	Height (in) (80-in min.)	Protrusion (in) (4-in max.)	Bench	Bench Distance (ft)			Shelter	Trash Can	Recycle	Bike Rack	Ground Surface	Length (ft), 8' min.	Width (ft), 5' min.	Run SI (slope of road)	Cross SI (2.0% max.)	Ground Surface	Length (ft), 4' min.	Width (ft), 2.5' min.	Run SI (2% max.)	Cross SI (2% max.)	ADA-compliant?	If No, Why?
X		X	101	5	X	21	X				Window	Handi-hut	Paved	OK	OK	OK	OK	Concrete	OK	OK	OK	OK	Y	ADAAG = American with Disabilities Act Accessibility Guidelines PROWAG = Public Right-of-Way Accessibility Guidelines (PROWAG still pending adoption)

Bus Stop #622
 (Keahole (Kona) Airport, Kupipi Street)
 Routes Served: 2, 70, 75, 80, 90, 202, 203



Sign					Amenities				Shelter Type	Shelter Manufacturer	Boarding Area					Bus Shelter					ADA Evaluation			
Req/ White	Blue Hele-On	Own Pole	Height (in) (80-in min.)	Protrusion (in) (4-in max.)	Bench	Bench Distance (ft)	Shelter	Trash Can			Recycle	Bike Rack	Ground Surface	Length (ft), 8' min.	Width (ft), 5' min.	Run SI (slope of road)	Cross SI (2.0% max.)	Ground Surface	Length (ft), 4' min.	Width (ft), 2.5' min.	Run SI (2% max.)	Cross SI (2% max.)	ADA-compliant?	If No, Why? ADAAG = American with Disabilities Act Accessibility Guidelines PROWAG = Public Right-of-Way Accessibility Guidelines (PROWAG still pending adoption)
X			57	N/A	X		X				Wood/Ladder, CMU	Unknown	Paved	OK	OK	OK	OK	Concrete	OK	OK	OK	OK	Y	

Bus Stop #628
 (Ane Keohokalole Hwy, Manawalea St)
 Routes Served: 2, 202



Sign					Amenities					Shelter Type	Shelter Manufacturer	Boarding Area					Bus Shelter				ADA Evaluation			
Red/ White	Blue Hele-On	Own Pole	Height (in) (80-in min.)	Protrusion (in) (4-in max.)	Bench	Bench Distance (ft)	Shelter	Trash Can	Recycle			Bike Rack	Ground Surface	Length (ft), 8' min.	Width (ft), 5' min.	Run SI (slope of road)	Cross SI (2.0% max.)	Ground Surface	Length (ft), 4' min.	Width (ft), 2.5' min.	Run SI (2% max.)	Cross SI (2% max.)	ADA-compliant?	If No, Why? ADAAG = American with Disabilities Act Accessibility Guidelines PROWAG = Public Right-of-Way Accessibility Guidelines (PROWAG still pending adoption)
											N/A		Paved	OK	OK	OK	OK	Concrete	OK	OK	OK	OK	Y	

Bus Stop #629
 (Ane Keohokalole Hwy, Manawalea St (North Bound))
 Routes Served: 2, 76, 202, 203



Sign					Amenities					Shelter Type	Shelter Manufacturer	Boarding Area					Bus Shelter					ADA Evaluation		
Red/ White	Blue Hele-On	Own Pole	Height (in) (80-in min.)	Protrusion (in) (4-in max.)	Bench	Bench Distance (ft)	Shelter	Trash Can	Recycle			Bike Rack	Ground Surface	Length (ft), 8' min.	Width (ft), 5' min.	Run SI (slope of road)	Cross SI (2.0% max.)	Ground Surface	Length (ft), 4' min.	Width (ft), 2.5' min.	Run SI (2% max.)	Cross SI (2% max.)	ADA-compliant?	If No, Why?
					X		X	X			CMU, Stone	Unknown	Paved	OK	OK	OK	OK	Concrete	OK	OK	OK	OK	Y	<p align="center">ADAAG = American with Disabilities Act Accessibility Guidelines PROWAG = Public Right-of-Way Accessibility Guidelines (PROWAG still pending adoption)</p>

Bus Stop #655
 (Royal Kona Resort, Alii Dr.)
 Routes Served: 201



Sign					Amenities				Shelter Type	Shelter Manufacturer	Boarding Area				Bus Shelter				ADA-compliant?	ADA Evaluation If No, Why? ADAAG = American with Disabilities Act Accessibility Guidelines PROWAG = Public Right-of-Way Accessibility Guidelines (PROWAG still pending adoption)						
Red/ White	Blue Hele-On	Own Pole	Height (in) (80-in min.)	Protrusion (in) (4-in max.)	Bench	Bench Distance (ft)	Shelter	Trash Can			Recycle	Bike Rack	Ground Surface	Length (ft), 8' min.	Width (ft), 5' min.	Run SI (slope of road)	Cross SI (2.0% max.)	Ground Surface			Length (ft), 4' min.	Width (ft), 2.5' min.	Run SI (2% max.)	Cross SI (2% max.)		
X	X	X	82	5							N/A					Paved	OK	OK	OK	3.2					N	Per ADAAG 810.2.4 Slope, perpendicular to the roadway, the slope of the bus stop boarding and alighting area shall not be steeper than 1:48 (2.08%). Since the measured cross slope exceeds 2.08%, the boarding area is not considered ADA-compliant.

Bus Stop #661
 (Living Stones Church at Alii Dr.)
 Routes Served: 201



Sign					Amenities					Shelter Type	Shelter Manufacturer	Boarding Area					Bus Shelter					ADA Evaluation				
Red/ White	Blue Hele-On	Own Pole	Height (in) (80-in min.)	Protrusion (in) (4-in max.)	Bench	Bench Distance (ft)	Shelter	Trash Can	Recycle			Bike Rack	Ground Surface	Length (ft), 8' min.	Width (ft), 5' min.	Run SI (slope of road)	Cross SI (2.0% max.)	Ground Surface	Length (ft), 4' min.	Width (ft), 2.5' min.	Run SI (2% max.)	Cross SI (2% max.)	ADA-compliant?	If No, Why?		
X	X		96	5							N/A					Paved	OK	OK	0.2	2.4					N	Per ADAAG 810.2.4 Slope, perpendicular to the roadway, the slope of the bus stop boarding and alighting area shall not be steeper than 1:48 (2.08%). Since the measured cross slope exceeds 2.08%, the boarding area is not considered ADA-compliant.

Bus Stop #663
 (Casa De Emdeko at Alii Dr.)
 Routes Served: 201



Sign					Amenities					Shelter Type	Shelter Manufacturer	Boarding Area				Bus Shelter				ADA Evaluation				
Red/ White	Blue Hele-On	Own Pole	Height (in) (80-in min.)	Protrusion (in) (4-in max.)	Bench	Bench Distance (ft)	Shelter	Trash Can	Recycle			Bike Rack	Ground Surface	Length (ft), 8' min.	Width (ft), 5' min.	Run SI (slope of road)	Cross SI (2.0% max.)	Ground Surface	Length (ft), 4' min.	Width (ft), 2.5' min.	Run SI (2% max.)	Cross SI (2% max.)	ADA-compliant?	If No, Why? ADAAG = American with Disabilities Act Accessibility Guidelines PROWAG = Public Right-of-Way Accessibility Guidelines (PROWAG still pending adoption)
	X	X	87	5	X	10	X				Window	Handi-hut	Paved	OK	OK	OK	OK	Concrete	OK	OK	OK	OK	Y	

Bus Stop #664
 (Laaloa (Magic Sands) at Alii Dr.)
 Routes Served: 201



Sign		Amenities					Shelter Type	Shelter Manufacturer	Boarding Area				Bus Shelter				ADA-compliant?	ADA Evaluation If No, Why? ADAAG = American with Disabilities Act Accessibility Guidelines PROWAG = Public Right-of-Way Accessibility Guidelines (PROWAG still pending adoption)						
Red/ White	Blue Hele-On	Own Pole	Height (in) (80-in min.)	Protrusion (in) (4-in max.)	Bench	Bench Distance (ft)			Shelter	Trash Can	Recycle	Bike Rack	Ground Surface	Length (ft), 8' min.	Width (ft), 5' min.	Run SI (slope of road)			Cross SI (2.0% max.)	Ground Surface	Length (ft), 4' min.	Width (ft), 2.5' min.	Run SI (2% max.)	Cross SI (2% max.)
X	X		83	5	X	14	X				Window	Handi-hut	Paved	OK	OK	OK	OK	Concrete	OK	OK	OK	OK	Y	

Bus Stop #666
(Kahaluu Beach at Alii Dr.)
Routes Served: 201



Sign					Amenities					Shelter Type	Shelter Manufacturer	Boarding Area				Bus Shelter				ADA Evaluation				
Red/ White	Blue Hele-On	Own Pole	Height (in) (80-in min.)	Protrusion (in) (4-in max.)	Bench	Bench Distance (ft)	Shelter	Trash Can	Recycle			Bike Rack	Ground Surface	Length (ft), 8' min.	Width (ft), 5' min.	Run SI (slope of road)	Cross SI (2.0% max.)	Ground Surface	Length (ft), 4' min.	Width (ft), 2.5' min.	Run SI (2% max.)	Cross SI (2% max.)	ADA-compliant?	If No, Why? ADAAG = American with Disabilities Act Accessibility Guidelines PROWAG = Public Right-of-Way Accessibility Guidelines (PROWAG still pending adoption)
X	X		99	5	X	13	X				Window	Handi-hut	Paved	OK	OK	OK	OK	Concrete	OK	OK	OK	OK	Y	

Bus Stop #667
(Kahaluu Beach at Alii Dr.)
Routes Served: 201



Sign				Amenities					Shelter Type	Shelter Manufacturer	Boarding Area					Bus Shelter					ADA Evaluation		
Red/ White	Blue Hele-On	Own Pole	Height (in) (80-in min.)	Protrusion (in) (4-in max.)	Bench	Bench Distance (ft)	Shelter	Trash Can			Recycle	Bike Rack	Ground Surface	Length (ft), 8' min.	Width (ft), 5' min.	Run Sl (slope of road)	Cross Sl (2.0% max.)	Ground Surface	Length (ft), 4' min.	Width (ft), 2.5' min.	Run Sl (2% max.)	Cross Sl (2% max.)	ADA-compliant?
	X	X	91	5							N/A		Paved	4	OK	OK	4.4					N	<p>1. Per ADAAG 810.2.4 Slope, perpendicular to the roadway, the slope of the bus stop boarding and alighting area shall not be steeper than 1:48 (2.08%). Since the measured cross slope exceeds 2.08%, the boarding area is not considered ADA-compliant.</p> <p>2. Per ADAAG 810.2.2 Dimensions, bus stop boarding and alighting areas shall provide a clear length of 8 feet minimum.</p>

Bus Stop #668
 (Outrigger Keauhou at Alii Dr.)
 Routes Served: 201



Sign					Amenities					Shelter Type	Shelter Manufacturer	Boarding Area				Bus Shelter				ADA-compliant?	ADA Evaluation If No, Why? ADAAG = American with Disabilities Act Accessibility Guidelines PROWAG = Public Right-of-Way Accessibility Guidelines (PROWAG still pending adoption)			
Red/ White	Blue Hele-On	Own Pole	Height (in) (80-in min.)	Protrusion (in) (4-in max.)	Bench	Bench Distance (ft)	Shelter	Trash Can	Recycle			Bike Rack	Ground Surface	Length (ft), 8' min.	Width (ft), 5' min.	Run Sl (slope of road)	Cross Sl (2.0% max.)	Ground Surface	Length (ft), 4' min.			Width (ft), 2.5' min.	Run Sl (2% max.)	Cross Sl (2% max.)
					X	16	X				Window	Handi-hut	Paved	OK	OK	OK	OK	Concrete	OK	OK	OK	OK	Y	

Bus Stop #669
(Kahaluu Beach at Alii Dr.)
Routes Served: 201



Sign					Amenities					Shelter Type	Shelter Manufacturer	Boarding Area				Bus Shelter				ADA Evaluation				
Red/ White	Blue Hele-On	Own Pole	Height (in) (80-in min.)	Protrusion (in) (4-in max.)	Bench	Bench Distance (ft)	Shelter	Trash Can	Recycle			Bike Rack	Ground Surface	Length (ft), 8' min.	Width (ft), 5' min.	Run Sl (slope of road)	Cross Sl (2.0% max.)	Ground Surface	Length (ft), 4' min.	Width (ft), 2.5' min.	Run Sl (2% max.)	Cross Sl (2% max.)	ADA-compliant?	If No, Why? ADAAG = American with Disabilities Act Accessibility Guidelines PROWAG = Public Right-of-Way Accessibility Guidelines (PROWAG still pending adoption)
X	X		94	5	X	16	X				Window	Handi-hut	Paved	OK	OK	OK	OK	Concrete	OK	OK	OK	OK	Y	

Bus Stop #671
 (Laaloa Bay at Alii Dr.)
 Routes Served: 201



Sign		Amenities					Shelter Type	Shelter Manufacturer	Boarding Area					Bus Shelter					ADA Evaluation					
Red/ White	Blue Hele-On	Own Pole	Height (in) (80-in min.)	Protrusion (in) (4-in max.)	Bench	Bench Distance (ft)			Shelter	Trash Can	Recycle	Bike Rack	Ground Surface	Length (ft), 8' min.	Width (ft), 5' min.	Run Sl (slope of road)	Cross Sl (2.0% max.)	Ground Surface	Length (ft), 4' min.	Width (ft), 2.5' min.	Run Sl (2% max.)	Cross Sl (2% max.)	ADA-compliant?	If No, Why? ADAAG = American with Disabilities Act Accessibility Guidelines PROWAG = Public Right-of-Way Accessibility Guidelines (PROWAG still pending adoption)
X	X	X	83	5							N/A		Paved	4	OK	OK	OK						N	Per ADAAG 810.2.2 Dimensions, bus stop boarding and alighting areas shall provide a clear length of 8 feet minimum.

Bus Stop #672
(Banyan Mart at Alii Dr.)
Routes Served: 201



Sign					Amenities				Shelter Type	Shelter Manufacturer	Boarding Area					Bus Shelter					ADA Evaluation					
Red/ White	Blue Hele-On	Own Pole	Height (in) (80-in min.)	Protrusion (in) (4-in max.)	Bench	Bench Distance (ft)	Shelter	Trash Can			Recycle	Bike Rack	Ground Surface	Length (ft), 8' min.	Width (ft), 5' min.	Run SI (slope of road)	Cross SI (2.0% max.)	Ground Surface	Length (ft), 4' min.	Width (ft), 2.5' min.	Run SI (2% max.)	Cross SI (2% max.)	ADA-compliant?	If No, Why?		
X	X		87	8							N/A					Paved	OK	OK	0.4	3.5					N	Per ADAAG 810.2.4 Slope, perpendicular to the roadway, the slope of the bus stop boarding and alighting area shall not be steeper than 1:48 (2.08%). Since the measured cross slope exceeds 2.08%, the boarding area is not considered ADA-compliant.

Bus Stop #673
 (My Hawaii Hostel at Alii Dr.)
 Routes Served: 201



Sign					Amenities					Shelter Type	Shelter Manufacturer	Boarding Area					Bus Shelter					ADA Evaluation		
Red/ White	Blue Hele-On	Own Pole	Height (in) (80-in min.)	Protrusion (in) (4-in max.)	Bench	Bench Distance (ft)	Shelter	Trash Can	Recycle			Bike Rack	Ground Surface	Length (ft), 8' min.	Width (ft), 5' min.	Run SI (slope of road)	Cross SI (2.0% max.)	Ground Surface	Length (ft), 4' min.	Width (ft), 2.5' min.	Run SI (2% max.)	Cross SI (2% max.)	ADA-compliant?	If No, Why?
X	X		79	5	X	12	X				Window	Handi-hut	Paved	OK	OK	OK	OK	Concrete	OK	OK	OK	OK	N	Per ADAAG 307.2 Protrusion Limits and PROWAG R402.3 Post-Mounted Objects, objects 27-80 inches above the finish surface shall overhang no more than 4 inches measured horizontally from the post.

Bus Stop #675
 (Casa De Emdeko/ Ali'i Lani Townhouses at Alii Dr.)
 Routes Served: 201



Sign					Amenities					Shelter Type	Shelter Manufacturer	Boarding Area					Bus Shelter					ADA Evaluation	
Red/ White	Blue Hele-On	Own Pole	Height (in) (80-in min.)	Protrusion (in) (4-in max.)	Bench	Bench Distance (ft)	Shelter	Trash Can	Recycle			Bike Rack	Ground Surface	Length (ft), 8' min.	Width (ft), 5' min.	Run SI (slope of road)	Cross SI (2.0% max.)	Ground Surface	Length (ft), 4' min.	Width (ft), 2.5' min.	Run SI (2% max.)	Cross SI (2% max.)	ADA-compliant?
X	X		87	5							N/A		Paved	5	OK	OK	OK					N	Per ADAAG 810.2.2 Dimensions, bus stop boarding and alighting areas shall provide a clear length of 8 feet minimum.

Bus Stop #677
(Lunapule at Alii Dr.)
Routes Served: 201



Sign					Amenities					Shelter Type	Shelter Manufacturer	Boarding Area				Bus Shelter				ADA-compliant?	ADA Evaluation If No, Why? ADAAG = American with Disabilities Act Accessibility Guidelines PROWAG = Public Right-of-Way Accessibility Guidelines (PROWAG still pending adoption)		
Red/ White	Blue Hele-On	Own Pole	Height (in) (80-in min.)	Protrusion (in) (4-in max.)	Bench	Bench Distance (ft)	Shelter	Trash Can	Recycle			Bike Rack	Ground Surface	Length (ft), 8' min.	Width (ft), 5' min.	Run Sl (slope of road)	Cross Sl (2.0% max.)	Ground Surface	Length (ft), 4' min.			Width (ft), 2.5' min.	Run Sl (2% max.)
X	X		88	5							N/A		Paved	OK	OK	OK	OK					Y	

Bus Stop #679
(Royal Kona Resort at Alii Dr.)
Routes Served: 201



Sign					Amenities				Shelter Type	Shelter Manufacturer	Boarding Area				Bus Shelter				ADA Evaluation							
Red/ White	Blue Hele-On	Own Pole	Height (in) (80-in min.)	Protrusion (in) (4-in max.)	Bench	Bench Distance (ft)	Shelter	Trash Can			Recycle	Bike Rack	Ground Surface	Length (ft), 8' min.	Width (ft), 5' min.	Run SI (slope of road)	Cross SI (2.0% max.)	Ground Surface	Length (ft), 4' min.	Width (ft), 2.5' min.	Run SI (2% max.)	Cross SI (2% max.)	ADA-compliant?	If No, Why?		
X	X		85	5							N/A					Paved	7	OK	OK	4.7					N	1. Per ADAAG 810.2.2 Dimensions, bus stop boarding and alighting areas shall provide a clear length of 8 feet minimum. 2. Per ADAAG 810.2.4 Slope, perpendicular to the roadway, the slope of the bus stop boarding and alighting area shall not be steeper than 1:48 (2.08%). Since the measured cross slope exceeds 2.08%, the boarding area is not considered ADA-compliant.

Bus Stop #701
 (Sheraton Keauhou Resort/ Kaleiopapa at Kaleiopapa Street)
 Routes Served: 204



Sign		Amenities					Shelter Type	Shelter Manufacturer	Boarding Area				Bus Shelter				ADA Evaluation							
Red/ White	Blue Hele-On	Own Pole	Height (in.) (80-in min.)	Protrusion (in) (4-in max.)	Bench	Bench Distance (ft)			Shelter	Trash Can	Recycle	Bike Rack	Ground Surface	Length (ft), 8' min.	Width (ft), 5' min.	Run SI (slope of road)	Cross SI (2.0% max.)	Ground Surface	Length (ft), 4' min.	Width (ft), 2.5' min.	Run SI (2% max.)	Cross SI (2% max.)	ADA-compliant?	If No, Why? ADAAG = American with Disabilities Act Accessibility Guidelines PROWAG = Public Right-of-Way Accessibility Guidelines (PROWAG still pending adoption)
X (2)	X (2)	X	85	5	X	19					Wood/Ladder	Unknown	Paved, Gravel	OK	OK	1.0	2.3	Wood	3	OK			N	1. Per ADAAG 810.2.4 Slope, perpendicular to the roadway, the slope of the bus stop boarding and alighting area shall not be steeper than 1:48 (2.08%). Since the measured cross slope exceeds 2.08%, the boarding area is not considered ADA-compliant. 2. Per ADAAG 810.2.1 Surface, bus stop boarding and alighting areas shall have a firm, stable surface. Loose material such as gravel will not meet ADA requirements.

Bus Stop #705
 (Kealakekua McDonalds at Māmalahoa Highway, Highway 11)
 Routes Served: 90, 204



Sign		Amenities					Shelter Type	Shelter Manufacturer	Boarding Area					Bus Shelter					ADA Evaluation				
Red/ White	Blue Hele-On	Own Pole	Height (in) (80-in min.)	Protrusion (in) (4-in max.)	Bench	Bench Distance (ft)			Shelter	Trash Can	Recycle	Bike Rack	Ground Surface	Length (ft), 8' min.	Width (ft), 5' min.	Run Sl (slope of road)	Cross Sl (2.0% max.)	Ground Surface	Length (ft), 4' min.	Width (ft), 2.5' min.	Run Sl (2% max.)	Cross Sl (2% max.)	ADA-compliant?
X (2)		X	75	7																			Per ADAAG 307.2 Protrusion Limits and PROWAG R402.3 Post-Mounted Objects, objects 27-80 inches above the finish surface shall overhang no more than 4 inches measured horizontally from the post.
		X	78	8							Paved	OK	OK	OK	OK						N		

Bus Stop #706
 (Kealakekua Park & Ride at Māmalahoa Highway, Highway 11)
 Routes Served: 90, 204



Sign					Amenities					Shelter Type	Shelter Manufacturer	Boarding Area					Bus Shelter				ADA Evaluation			
Red/ White	Blue Hele-On	Own Pole	Height (in) (80-in min.)	Protrusion (in) (4-in max.)	Bench	Bench Distance (ft)	Shelter	Trash Can	Recycle			Bike Rack	Ground Surface	Length (ft), 8' min.	Width (ft), 5' min.	Run Sl (slope of road)	Cross Sl (2.0% max.)	Ground Surface	Length (ft), 4' min.	Width (ft), 2.5' min.	Run Sl (2% max.)	Cross Sl (2% max.)	ADA-compliant?	If No, Why?
X (2)		X	87	5	X	7	X	X			Window	Brasco	Paved	OK	OK	OK	OK	Concrete	OK	OK	OK	OK	N	Per ADAAG 307.2 Protrusion Limits and PROWAG R402.3 Post-Mounted Objects, objects 27-80 inches above the finish surface shall overhang no more than 4 inches measured horizontally from the post.
		X	74	8																				

Bus Stop #707
 (Kealakekua/Konawaena at Māmalahoa Highway, Highway 11)
 Routes Served: 90, 204



Sign					Amenities					Shelter Type	Shelter Manufacturer	Boarding Area					Bus Shelter				ADA Evaluation			
Red/ White	Blue Hele-On	Own Pole	Height (in) (80-in min.)	Protrusion (in) (4-in max.)	Bench	Bench Distance (ft)	Shelter	Trash Can	Recycle			Bike Rack	Ground Surface	Length (ft), 8' min.	Width (ft), 5' min.	Run Sl (slope of road)	Cross Sl (2.0% max.)	Ground Surface	Length (ft), 4' min.	Width (ft), 2.5' min.	Run Sl (2% max.)	Cross Sl (2% max.)	ADA-compliant?	If No, Why? ADAAG = American with Disabilities Act Accessibility Guidelines PROWAG = Public Right-of-Way Accessibility Guidelines (PROWAG still pending adoption)
X	X		90	5	X	17	X				Window	Handi-hut	Paved	OK	OK	OK	OK	Concrete	OK	OK	OK	OK	Y	

Bus Stop #715
 (Yano Hall/Captain Cook at Māmalahoa Highway, Highway 11)
 Routes Served: 90, 204



Sign					Amenities					Shelter Type	Shelter Manufacturer	Boarding Area					Bus Shelter					ADA Evaluation		
Red/ White	Blue Hele-On	Own Pole	Height (in) (80-in min.)	Protrusion (in) (4-in max.)	Bench	Bench Distance (ft)	Shelter	Trash Can	Recycle			Bike Rack	Ground Surface	Length (ft), 8' min.	Width (ft), 5' min.	Run SI (slope of road)	Cross SI (2.0% max.)	Ground Surface	Length (ft), 4' min.	Width (ft), 2.5' min.	Run SI (2% max.)	Cross SI (2% max.)	ADA-compliant?	If No, Why?
X		X	83	11	X	8.5	X				Wood/Ladder, CMU	Unknown	Paved	OK	OK	1.0	2.3	Concrete	OK	OK	OK	OK	N	Per ADAAG 810.2.4 Slope, perpendicular to the roadway, the slope of the bus stop boarding and alighting area shall not be steeper than 1:48 (2.08%). Since the measured cross slope exceeds 2.08%, the boarding area is not considered ADA-compliant.

Bus Stop #716
 (Kealakekua/Konawaena at Māmalahoa Highway, Highway 11)
 Routes Served: 90, 204



Sign					Amenities					Shelter Type	Shelter Manufacturer	Boarding Area					Bus Shelter					ADA Evaluation		
Red/ White	Blue Hele-On	Own Pole	Height (in) (80-in min.)	Protrusion (in) (4-in max.)	Bench	Bench Distance (ft)	Shelter	Trash Can	Recycle			Bike Rack	Ground Surface	Length (ft), 8' min.	Width (ft), 5' min.	Run SI (slope of road)	Cross SI (2.0% max.)	Ground Surface	Length (ft), 4' min.	Width (ft), 2.5' min.	Run SI (2% max.)	Cross SI (2% max.)	ADA-compliant?	If No, Why?
X	X		86	5	X	11.1					Window	Handi-hut	Paved	OK	OK	1.0	3.8	Concrete	OK	OK	OK	OK	N	Per ADAAG 810.2.4 Slope, perpendicular to the roadway, the slope of the bus stop boarding and alighting area shall not be steeper than 1:48 (2.08%). Since the measured cross slope exceeds 2.08%, the boarding area is not considered ADA-compliant.

Bus Stop #717
 (Kealakekua/Konawaena at Māmalahoa Highway, Highway 11)
 Routes Served: 90, 204



Sign		Amenities					Shelter Type	Shelter Manufacturer	Boarding Area					Bus Shelter				ADA-compliant?	ADA Evaluation					
Red/ White	Blue Hele-On	Own Pole	Height (in) (80-in min.)	Protrusion (in) (4-in max.)	Bench	Bench Distance (ft)			Shelter	Trash Can	Recycle	Bike Rack	Ground Surface	Length (ft), 8' min.	Width (ft), 5' min.	Run Sl (slope of road)	Cross Sl (2.0% max.)			Ground Surface	Length (ft), 4' min.	Width (ft), 2.5' min.	Run Sl (2% max.)	Cross Sl (2% max.)
X		X	74	8	X	10.5	X	X			Window	Brasco	Paved	OK	OK	OK	OK	Concrete	OK	OK	OK	OK	N	Per ADAAG 307.2 Protrusion Limits and PROWAG R402.3 Post-Mounted Objects, objects 27-80 inches above the finish surface shall overhang no more than 4 inches measured horizontally from the post.

Bus Stop #802
(Ocean View Park and Rid Lot, across Malama Market)
Routes Served: 10, 12, 90



Sign				Amenities					Shelter Type	Shelter Manufacturer	Boarding Area					Bus Shelter					ADA Evaluation		
Red/ White	Blue Hele-On	Own Pole	Height (in) (80-in min.)	Protrusion (in) (4-in max.)	Bench	Bench Distance (ft)	Shelter	Trash Can			Recycle	Bike Rack	Ground Surface	Length (ft), 8' min.	Width (ft), 5' min.	Run SI (slope of road)	Cross SI (2.0% max.)	Ground Surface	Length (ft), 4' min.	Width (ft), 2.5' min.	Run SI (2% max.)	Cross SI (2% max.)	ADA-compliant?
X	X		80	7							N/A		Paved, Gravel	OK	OK	OK	OK					N	Per ADAAG 810.2.1 Surface, bus stop boarding and alighting areas shall have a firm, stable surface. Loose material such as gravel will not meet ADA requirements.

Bus Stop #805
 (Naalehu School, Hwy 11 at Ohai Rd.)
 Routes Served: 10, 12, 90



Sign			Amenities				Shelter Type	Shelter Manufacturer	Boarding Area					Bus Shelter				ADA Evaluation						
Red/White	Blue Hele-On	Own Pole	Height (in) (80-in min.)	Protrusion (in) (4-in max.)	Bench	Bench Distance (ft)			Shelter	Trash Can	Recycle	Bike Rack	Ground Surface	Length (ft), 8' min.	Width (ft), 5' min.	Run Sl (slope of road)	Cross Sl (2.0% max.)	Ground Surface	Length (ft), 4' min.	Width (ft), 2.5' min.	Run Sl (2% max.)	Cross Sl (2% max.)	ADA-compliant?	If No, Why? ADAAG = American with Disabilities Act Accessibility Guidelines PROWAG = Public Right-of-Way Accessibility Guidelines (PROWAG still pending adoption)
X	X	X	84	5	X	5					Wood/Ladder	Unknown	Conc	OK	OK	OK	OK	Concrete	OK	OK	OK	OK	Y	

Bus Stop #807
(Punaluu Beach Park, Ninole Loop Rd.)
Routes Served: 10, 90



Sign					Amenities				Shelter Type	Shelter Manufacturer	Boarding Area					Bus Shelter					ADA Evaluation		
Red/ White	Blue Hele-On	Own Pole	Height (in) (80-in min.)	Protrusion (in) (4-in max.)	Bench	Bench Distance (ft)	Shelter	Trash Can			Recycle	Bike Rack	Ground Surface	Length (ft), 8' min.	Width (ft), 5' min.	Run SI (slope of road)	Cross SI (2.0% max.)	Ground Surface	Length (ft), 4' min.	Width (ft), 2.5' min.	Run SI (2% max.)	Cross SI (2% max.)	ADA-compliant?
X	X		80	5.5	X	14	X				Window	Handi-hut	Paved	OK	OK	OK	OK					Y	<p align="center">ADAAG = American with Disabilities Act Accessibility Guidelines PROWAG = Public Right-of-Way Accessibility Guidelines (PROWAG still pending adoption)</p>

Bus Stop #808
(Pahala Shopping Center, Kamani Street)
Routes Served: 10, 12, 90



Sign		Amenities					Shelter Type	Shelter Manufacturer	Boarding Area				Bus Shelter				ADA Evaluation							
Red/ White	Blue Hele-On	Own Pole	Height (in) (80-in min.)	Protrusion (in) (4-in max.)	Bench	Bench Distance (ft)			Shelter	Trash Can	Recycle	Bike Rack	Ground Surface	Length (ft), 8' min.	Width (ft), 5' min.	Run Sl (slope of road)	Cross Sl (2.0% max.)	Ground Surface	Length (ft), 4' min.	Width (ft), 2.5' min.	Run Sl (2% max.)	Cross Sl (2% max.)	ADA-compliant?	If No, Why? ADAAG = American with Disabilities Act Accessibility Guidelines PROWAG = Public Right-of-Way Accessibility Guidelines (PROWAG still pending adoption)
X		X	80	5	X	12	X				Window	Brasco	Paved	OK	OK	OK	OK	Concrete	OK	OK	OK	OK	Y	

Bus Stop #900
(Panaewa Rainforest Zoo, in parking lot at entrance)
Routes Served: 10, 402, 403



Sign			Amenities					Shelter Type	Shelter Manufacturer	Boarding Area					Bus Shelter					ADA Evaluation			
Red/ White Blue Hele-On	Own Pole	Height (in) (80-in min.)	Protrusion (in) (4-in max.)	Bench	Bench Distance (ft)	Shelter	Trash Can			Recycle	Bike Rack	Ground Surface	Length (ft), 8' min.	Width (ft), 5' min.	Run Sl (slope of road)	Cross Sl (2.0% max.)	Ground Surface	Length (ft), 4' min.	Width (ft), 2.5' min.	Run Sl (2% max.)	Cross Sl (2% max.)	ADA-compliant?	If No, Why? ADAAG = American with Disabilities Act Accessibility Guidelines PROWAG = Public Right-of-Way Accessibility Guidelines (PROWAG still pending adoption)
				X		X				Other		Paved	OK	OK	OK	OK	Concrete	OK	OK	OK	OK	Y	

Bus Stop #905
 (Fern Acres, Puhala Street)
 Routes Served: 403



Sign					Amenities					Shelter Type	Shelter Manufacturer	Boarding Area				Bus Shelter				ADA Evaluation			
Red/ White	Blue Hele-On	Own Pole	Height (in) (80-in min.)	Protrusion (in) (4-in max.)	Bench	Bench Distance (ft)	Shelter	Trash Can	Recycle			Bike Rack	Ground Surface	Length (ft), 8' min.	Width (ft), 5' min.	Run Sl (slope of road)	Cross Sl (2.0% max.)	Ground Surface	Length (ft), 4' min.	Width (ft), 2.5' min.	Run Sl (2% max.)	Cross Sl (2% max.)	ADA-compliant?
					X						Wood with Metal Roof	Unknown	Gravel									N	Per ADAAG 810.2.1 Surface, bus stop boarding and alighting areas shall have a firm, stable surface. Loose material such as gravel will not meet ADA requirements.

Bus Stop #907
 (Fern Acres, Orchid Street at Lehua Street)
 Routes Served: 403



Sign					Amenities					Shelter Type	Shelter Manufacturer	Boarding Area				Bus Shelter				ADA-compliant?	ADA Evaluation If No, Why? ADAAG = American with Disabilities Act Accessibility Guidelines PROWAG = Public Right-of-Way Accessibility Guidelines (PROWAG still pending adoption)		
Red/ White	Blue Hele-On	Own Pole	Height (in) (80-in min.)	Protrusion (in) (4-in max.)	Bench	Bench Distance (ft)	Shelter	Trash Can	Recycle			Bike Rack	Ground Surface	Length (ft), 8' min.	Width (ft), 5' min.	Run SI (slope of road)	Cross SI (2.0% max.)	Ground Surface	Length (ft), 4' min.			Width (ft), 2.5' min.	Run SI (2% max.)
					X						Wood with Metal Roof	Unknown	Gravel									N	Per ADAAG 810.2.1 Surface, bus stop boarding and alighting areas shall have a firm, stable surface. Loose material such as gravel will not meet ADA requirements.

Bus Stop #908
 (Lehua Street)
 Routes Served: 403



Sign					Amenities					Shelter Type	Shelter Manufacturer	Boarding Area					Bus Shelter					ADA Evaluation	
Red/ White	Blue Hele-On	Own Pole	Height (in) (80-in min.)	Protrusion (in) (4-in max.)	Bench	Bench Distance (ft)	Shelter	Trash Can	Recycle			Bike Rack	Ground Surface	Length (ft), 8' min.	Width (ft), 5' min.	Run SI (slope of road)	Cross SI (2.0% max.)	Ground Surface	Length (ft), 4' min.	Width (ft), 2.5' min.	Run SI (2% max.)	Cross SI (2% max.)	ADA-compliant?
					X						Wood with Metal Roof	Unknown	Gravel									N	Per ADAAG 810.2.1 Surface, bus stop boarding and alighting areas shall have a firm, stable surface. Loose material such as gravel will not meet ADA requirements.

Bus Stop #921
(Kurtistown Park East, Highway 11)
Routes Served: 10, 11, 402, 403



Sign					Amenities					Shelter Type	Shelter Manufacturer	Boarding Area					Bus Shelter				ADA Evaluation			
Red/ White	Blue Hele-On	Own Pole	Height (in) (80-in min.)	Protrusion (in) (4-in max.)	Bench	Bench Distance (ft)	Shelter	Trash Can	Recycle			Bike Rack	Ground Surface	Length (ft), 8' min.	Width (ft), 5' min.	Run Sl (slope of road)	Cross Sl (2.0% max.)	Ground Surface	Length (ft), 4' min.	Width (ft), 2.5' min.	Run Sl (2% max.)	Cross Sl (2% max.)	ADA-compliant?	If No, Why? ADAAG = American with Disabilities Act Accessibility Guidelines PROWAG = Public Right-of-Way Accessibility Guidelines (PROWAG still pending adoption)
					X	9			X		Wood/Ladder	Unknown	Conc	OK	OK	OK	OK	Concrete	OK	OK	OK	OK	Y	

Bus Stop #922
 (Kurtistown East, Highway 11 at Kuaaina Road)
 Routes Served: 10, 11, 403



Sign					Amenities					Shelter Type	Shelter Manufacturer	Boarding Area					Bus Shelter					ADA Evaluation	
Red/ White	Blue Hele-On	Own Pole	Height (in) (80-in min.)	Protrusion (in) (4-in max.)	Bench	Bench Distance (ft)	Shelter	Trash Can	Recycle			Bike Rack	Ground Surface	Length (ft), 8' min.	Width (ft), 5' min.	Run Sl (slope of road)	Cross Sl (2.0% max.)	Ground Surface	Length (ft), 4' min.	Width (ft), 2.5' min.	Run Sl (2% max.)	Cross Sl (2% max.)	ADA-compliant?
X		X	82	5							N/A		Paved	OK	OK	OK	OK					Y	ADAAG = American with Disabilities Act Accessibility Guidelines PROWAG = Public Right-of-Way Accessibility Guidelines (PROWAG still pending adoption)

Bus Stop #924
 (Keaau North, Old Volcano Road)
 Routes Served: 10, 11, 40, 402, 403



Sign		Amenities					Shelter Type	Shelter Manufacturer	Boarding Area					Bus Shelter					ADA Evaluation					
Red/ White	Blue Hele-On	Own Pole	Height (in) (80-in min.)	Protrusion (in) (4-in max.)	Bench	Bench Distance (ft)			Shelter	Trash Can	Recycle	Bike Rack	Ground Surface	Length (ft), 8' min.	Width (ft), 5' min.	Run SI (slope of road)	Cross SI (2.0% max.)	Ground Surface	Length (ft), 4' min.	Width (ft), 2.5' min.	Run SI (2% max.)	Cross SI (2% max.)	ADA-compliant?	If No, Why?
X	X		85	5	X	9.67	X	X			Wood/Ladder	Unknown	Paved	OK	OK	0.6	2.7	Concrete	OK	OK	OK	OK	N	Per ADAAG 810.2.4 Slope, perpendicular to the roadway, the slope of the bus stop boarding and alighting area shall not be steeper than 1:48 (2.08%). Since the measured cross slope exceeds 2.08%, the boarding area is not considered ADA-compliant.

Bus Stop #943
 (Hawaiian Beaches, Kahakai Blvd at Akule Street)
 Routes Served: 401



Sign		Amenities					Shelter Type	Shelter Manufacturer	Boarding Area				Bus Shelter				ADA Evaluation						
Red/ White	Blue Hele-On	Own Pole	Height (in) (80-in min.)	Protrusion (in) (4-in max.)	Bench	Bench Distance (ft)			Shelter	Trash Can	Recycle	Bike Rack	Ground Surface	Length (ft), 8' min.	Width (ft), 5' min.	Run SI (slope of road)	Cross SI (2.0% max.)	Ground Surface	Length (ft), 4' min.	Width (ft), 2.5' min.	Run SI (2% max.)	Cross SI (2% max.)	ADA-compliant?
X	X		80	5	X		X				Wood/Ladder (Custom)	Unknown	Grass									N	Per ADAAG 810.2.1 Surface, bus stop boarding and alighting areas shall have a firm, stable surface. Per DCAB interpretive opinion 2011-02, grass is not a firm, stable surface.

Bus Stop #944
 (Hawaiian Beaches, Kahakai Blvd at Aweoweo Street)
 Routes Served: 401



Sign			Amenities				Shelter Type	Shelter Manufacturer	Boarding Area					Bus Shelter					ADA Evaluation				
Red/ White	Blue Hele-On	Own Pole	Height (in) (80-in min.)	Protrusion (in) (4-in max.)	Bench	Bench Distance (ft)			Shelter	Trash Can	Recycle	Bike Rack	Ground Surface	Length (ft), 8' min.	Width (ft), 5' min.	Run SI (slope of road)	Cross SI (2.0% max.)	Ground Surface	Length (ft), 4' min.	Width (ft), 2.5' min.	Run SI (2% max.)	Cross SI (2% max.)	ADA-compliant?
X		X	80	5							N/A		Grass									N	Per ADAAG 810.2.1 Surface, bus stop boarding and alighting areas shall have a firm, stable surface. Per DCAB interpretive opinion 2011-02, grass is not a firm, stable surface.

Bus Stop #946
 (Hawaiian Beaches, Kahakai Blvd at South Puni Mauka Loop)
 Routes Served: 401



Sign					Amenities					Shelter Type	Shelter Manufacturer	Boarding Area				Bus Shelter				ADA Evaluation				
Red/ White	Blue Hele-On	Own Pole	Height (in) (80-in min.)	Protrusion (in) (4-in max.)	Bench	Bench Distance (ft)	Shelter	Trash Can	Recycle			Bike Rack	Ground Surface	Length (ft), 8' min.	Width (ft), 5' min.	Run Sl (slope of road)	Cross Sl (2.0% max.)	Ground Surface	Length (ft), 4' min.	Width (ft), 2.5' min.	Run Sl(2% max.)	Cross Sl (2% max.)	ADA-compliant?	If No, Why? ADAAG = American with Disabilities Act Accessibility Guidelines PROWAG = Public Right-of-Way Accessibility Guidelines (PROWAG still pending adoption)
X	X		80	5	X	14	X				Wood/Ladder	Pahoa Hardware	Grass					Grass					N	Per ADAAG 810.2.1 Surface, bus stop boarding and alighting areas shall have a firm, stable surface. Per DCAB interpretive opinion 2011-02, grass is not a firm, stable surface.

Bus Stop #947
 (Hawaiian Beaches, Kahakai Blvd at Kahala Street)
 Routes Served: 401



Sign				Amenities					Shelter Type	Shelter Manufacturer	Boarding Area				Bus Shelter				ADA Evaluation				
Red/ White	Blue Hele-On	Own Pole	Height (in) (80-in min.)	Protrusion (in) (4-in max.)	Bench	Bench Distance (ft)	Shelter	Trash Can			Recycle	Bike Rack	Ground Surface	Length (ft), 8' min.	Width (ft), 5' min.	Run SI (slope of road)	Cross SI (2.0% max.)	Ground Surface	Length (ft), 4' min.	Width (ft), 2.5' min.	Run SI (2% max.)	Cross SI (2% max.)	ADA-compliant?
X	X		80	5							N/A		Grass									N	Per ADAAG 810.2.1 Surface, bus stop boarding and alighting areas shall have a firm, stable surface. Per DCAB interpretive opinion 2011-02, grass is not a firm, stable surface.

Bus Stop #948
 (Hawaiian Beaches, Kahakai Blvd at Lalakea Street)
 Routes Served: 401



Sign					Amenities				Shelter Type	Shelter Manufacturer	Boarding Area				Bus Shelter				ADA Evaluation				
Red/ White	Blue Hele-On	Own Pole	Height (in) (80-in min.)	Protrusion (in) (4-in max.)	Bench	Bench Distance (ft)	Shelter	Trash Can			Recycle	Bike Rack	Ground Surface	Length (ft), 8' min.	Width (ft), 5' min.	Run SI (slope of road)	Cross SI (2.0% max.)	Ground Surface	Length (ft), 4' min.	Width (ft), 2.5' min.	Run SI (2% max.)	Cross SI (2% max.)	ADA-compliant?
X	X		80	5.5							N/A		Grass									N	Per ADAAG 810.2.1 Surface, bus stop boarding and alighting areas shall have a firm, stable surface. Per DCAB interpretive opinion 2011-02, grass is not a firm, stable surface.

Bus Stop #949
 (Hawaiian Beaches, Kahakai Blvd at Malolo Street)
 Routes Served: 401



Sign					Amenities					Shelter Type	Shelter Manufacturer	Boarding Area					Bus Shelter					ADA Evaluation	
Red/ White	Blue Hele-On	Own Pole	Height (in) (80-in min.)	Protrusion (in) (4-in max.)	Bench	Bench Distance (ft)	Shelter	Trash Can	Recycle			Bike Rack	Ground Surface	Length (ft), 8' min.	Width (ft), 5' min.	Run SI (slope of road)	Cross SI (2.0% max.)	Ground Surface	Length (ft), 4' min.	Width (ft), 2.5' min.	Run SI (2% max.)	Cross SI (2% max.)	ADA-compliant?
	X	X	80	5							N/A		Grass									N	Per ADAAG 810.2.1 Surface, bus stop boarding and alighting areas shall have a firm, stable surface. Per DCAB interpretive opinion 2011-02, grass is not a firm, stable surface.

Bus Stop #952
 (Hawaiian Beaches, Kahakai Blvd at Ophi Street)
 Routes Served: 401



Sign		Amenities					Shelter Type	Shelter Manufacturer	Boarding Area				Bus Shelter				ADA-compliant?	ADA Evaluation					
Red/ White	Blue Hele-On	Own Pole	Height (in) (80-in min.)	Protrusion (in) (4-in max.)	Bench	Bench Distance (ft)			Shelter	Trash Can	Recycle	Bike Rack	Ground Surface	Length (ft), 8' min.	Width (ft), 5' min.	Run SI (slope of road)			Cross SI (2.0% max.)	Ground Surface	Length (ft), 4' min.	Width (ft), 2.5' min.	Run SI (2% max.)
X	X	X	80	5							N/A		Grass									N	Per ADAAG 810.2.1 Surface, bus stop boarding and alighting areas shall have a firm, stable surface. Per DCAB interpretive opinion 2011-02, grass is not a firm, stable surface.

If No, Why?
 ADAAG = American with Disabilities Act
 Accessibility Guidelines
 PROWAG = Public Right-of-Way Accessibility Guidelines
 (PROWAG still pending adoption)

Bus Stop #954
 (Hawaiian Beaches, South Puni Makai Loop at Opihi Street)
 Routes Served: 401



Sign		Amenities					Shelter Type	Shelter Manufacturer	Boarding Area				Bus Shelter				ADA Evaluation						
Red/ White	Blue Hele-On	Own Pole	Height (in) (80-in min.)	Protrusion (in) (4-in max.)	Bench	Bench Distance (ft)			Shelter	Trash Can	Recycle	Bike Rack	Ground Surface	Length (ft), 8' min.	Width (ft), 5' min.	Run Sl (slope of road)	Cross Sl (2.0% max.)	Ground Surface	Length (ft), 4' min.	Width (ft), 2.5' min.	Run Sl (2% max.)	Cross Sl (2% max.)	ADA-compliant?
X			80	N/A							N/A					Grass						N	Per ADAAG 810.2.1 Surface, bus stop boarding and alighting areas shall have a firm, stable surface. Per DCAB interpretive opinion 2011-02, grass is not a firm, stable surface.

Bus Stop #955
 (Hawaiian Beaches, North Puni Makai Loop at Oio Street)
 Routes Served: 401



Sign				Amenities				Shelter Type	Shelter Manufacturer	Boarding Area				Bus Shelter				ADA Evaluation					
Red/ White	Blue Hele-On	Own Pole	Height (in) (80-in min.)	Protrusion (in) (4-in max.)	Bench	Bench Distance (ft)	Shelter			Trash Can	Recycle	Bike Rack	Ground Surface	Length (ft), 8' min.	Width (ft), 5' min.	Run SI (slope of road)	Cross SI (2.0% max.)	Ground Surface	Length (ft), 4' min.	Width (ft), 2.5' min.	Run SI (2% max.)	Cross SI (2% max.)	ADA-compliant?
X			75	5							N/A		Grass									N	1. Per ADAAG 810.2.1 Surface, bus stop boarding and alighting areas shall have a firm, stable surface. Per DCAB interpretive opinion 2011-02, grass is not a firm, stable surface. 2. Per ADAAG 307.2 Protrusion Limits and PROWAG R402.3 Post-Mounted Objects, objects 27-80 inches above the finish surface shall overhang no more than 4 inches measured horizontally from the post.

Bus Stop #956
 (Hawaiian Beaches, North Puni Makai Loop at Niuhi Street)
 Routes Served: 401



Sign		Amenities				Shelter Type	Shelter Manufacturer	Boarding Area					Bus Shelter					ADA Evaluation					
Red/White	Blue Hele-On	Own Pole	Height (in) (80-in min.)	Protrusion (in) (4-in max.)	Bench			Bench Distance (ft)	Shelter	Trash Can	Recycle	Bike Rack	Ground Surface	Length (ft), 8' min.	Width (ft), 5' min.	Run SI (slope of road)	Cross SI (2.0% max.)	Ground Surface	Length (ft), 4' min.	Width (ft), 2.5' min.	Run SI (2% max.)	Cross SI (2% max.)	ADA-compliant?
X			75	5							N/A		Grass									N	1. Per ADAAG 810.2.1 Surface, bus stop boarding and alighting areas shall have a firm, stable surface. Per DCAB interpretive opinion 2011-02, grass is not a firm, stable surface. 2. Per ADAAG 307.2 Protrusion Limits and PROWAG R402.3 Post-Mounted Objects, objects 27-80 inches above the finish surface shall overhang no more than 4 inches measured horizontally from the post.

Bus Stop #957
 (Hawaiian Beaches, North Puni Makai Loop at Nenu Street)
 Routes Served: 401



Sign					Amenities					Shelter Type	Shelter Manufacturer	Boarding Area				Bus Shelter				ADA-compliant?	ADA Evaluation If No, Why? ADAAG = American with Disabilities Act Accessibility Guidelines PROWAG = Public Right-of-Way Accessibility Guidelines (PROWAG still pending adoption)		
Red/ White	Blue Hele-On	Own Pole	Height (in) (80-in min.)	Protrusion (in) (4-in max.)	Bench	Bench Distance (ft)	Shelter	Trash Can	Recycle			Bike Rack	Ground Surface	Length (ft), 8' min.	Width (ft), 5' min.	Run SI (slope of road)	Cross SI (2.0% max.)	Ground Surface	Length (ft), 4' min.			Width (ft), 2.5' min.	Run SI (2% max.)
X	X		80	5							Wood/Ladder	Donated by Community	Grass									N	Per ADAAG 810.2.1 Surface, bus stop boarding and alighting areas shall have a firm, stable surface. Per DCAB interpretive opinion 2011-02, grass is not a firm, stable surface.

Bus Stop #958
 (Hawaiian Beaches, North Puni Makai Loop at Moano Street)
 Routes Served: 401



Sign					Amenities					Shelter Type	Shelter Manufacturer	Boarding Area				Bus Shelter				ADA Evaluation			
Red/ White	Blue Hele-On	Own Pole	Height (in) (80-in min.)	Protrusion (in) (4-in max.)	Bench	Bench Distance (ft)	Shelter	Trash Can	Recycle			Bike Rack	Ground Surface	Length (ft), 8' min.	Width (ft), 5' min.	Run SI (slope of road)	Cross SI (2.0% max.)	Ground Surface	Length (ft), 4' min.	Width (ft), 2.5' min.	Run SI (2% max.)	Cross SI (2% max.)	ADA-compliant?
X			75	5.5							N/A		Grass									N	1. Per ADAAG 810.2.1 Surface, bus stop boarding and alighting areas shall have a firm, stable surface. Per DCAB interpretive opinion 2011-02, grass is not a firm, stable surface. 2. Per ADAAG 307.2 Protrusion Limits and PROWAG R402.3 Post-Mounted Objects, objects 27-80 inches above the finish surface shall overhang no more than 4 inches measured horizontally from the post.

Bus Stop #963
 (Hawaiian Beaches, North Puni Mauka Loop at Ina Street)
 Routes Served: 401



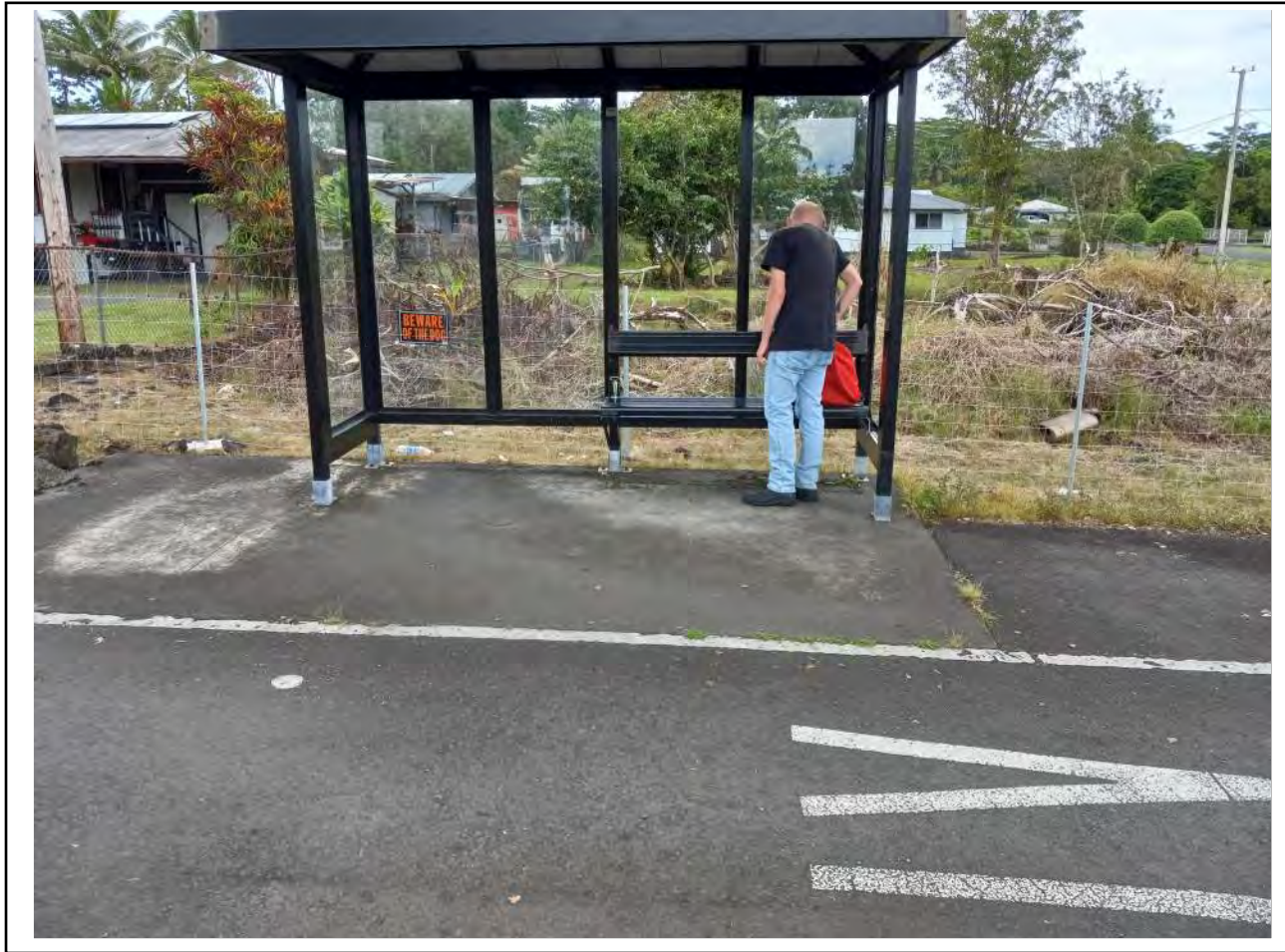
Sign					Amenities					Shelter Type	Shelter Manufacturer	Boarding Area				Bus Shelter				ADA-compliant?	ADA Evaluation If No, Why? ADAAG = American with Disabilities Act Accessibility Guidelines PROWAG = Public Right-of-Way Accessibility Guidelines (PROWAG still pending adoption)		
Red/ White	Blue Hele-On	Own Pole	Height (in) (80-in min.)	Protrusion (in) (4-in max.)	Bench	Bench Distance (ft)	Shelter	Trash Can	Recycle			Bike Rack	Ground Surface	Length (ft), 8' min.	Width (ft), 5' min.	Run SI (slope of road)	Cross SI (2.0% max.)	Ground Surface	Length (ft), 4' min.			Width (ft), 2.5' min.	Run SI (2% max.)
X	X		80	5.5							N/A		Grass									N	Per ADAAG 810.2.1 Surface, bus stop boarding and alighting areas shall have a firm, stable surface. Per DCAB interpretive opinion 2011-02, grass is not a firm, stable surface.

Bus Stop #965
 (North Puni Mauka Loop at Heepali Street)
 Routes Served: 401



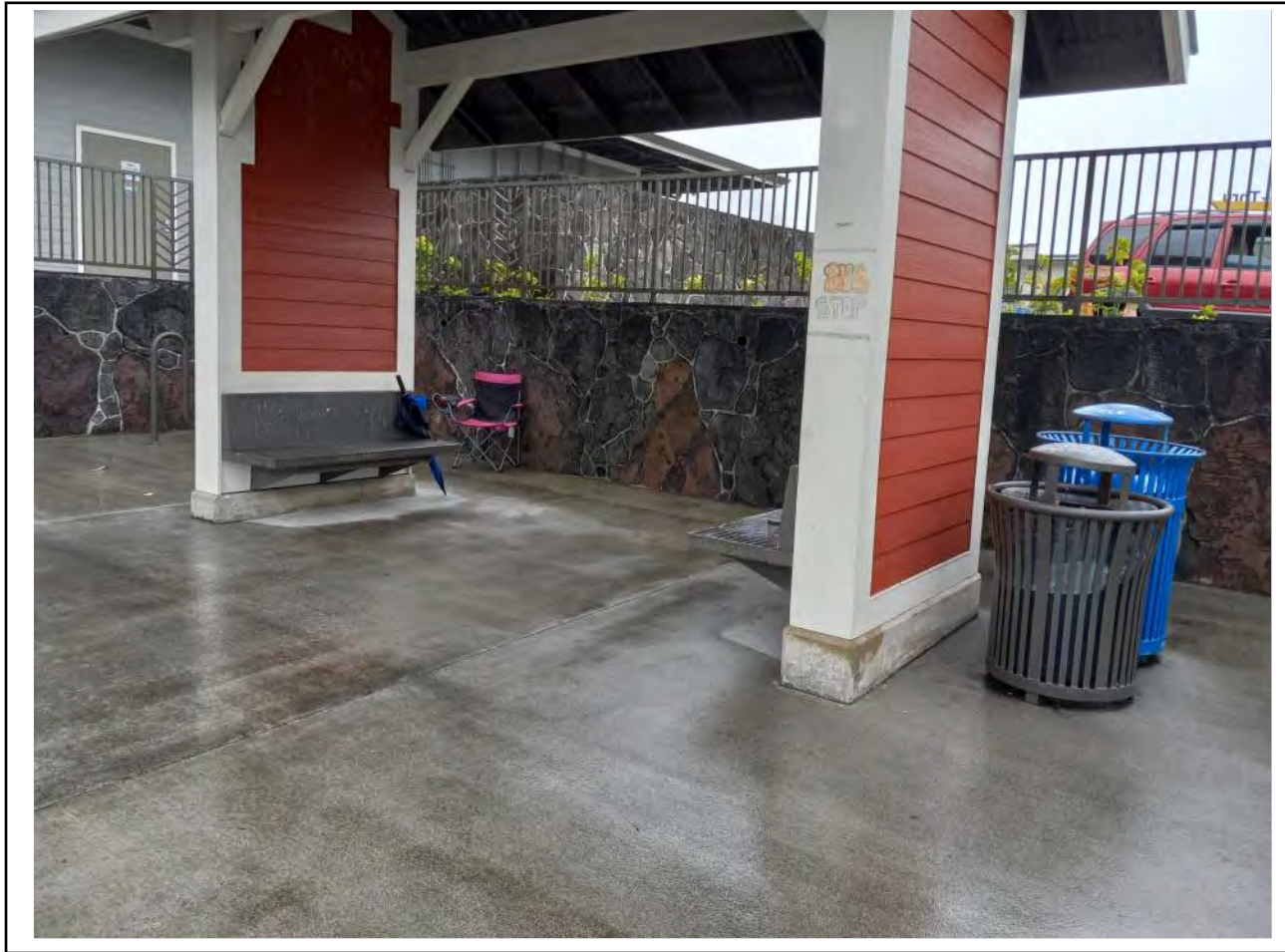
Sign		Amenities					Shelter Type	Shelter Manufacturer	Boarding Area					Bus Shelter					ADA Evaluation				
Red/ White	Blue Hele-On	Own Pole	Height (in) (80-in min.)	Protrusion (in) (4-in max.)	Bench	Bench Distance (ft)			Shelter	Trash Can	Recycle	Bike Rack	Ground Surface	Length (ft), 8' min.	Width (ft), 5' min.	Run Sl (slope of road)	Cross Sl (2.0% max.)	Ground Surface	Length (ft), 4' min.	Width (ft), 2.5' min.	Run Sl (2% max.)	Cross Sl (2% max.)	ADA-compliant?
X											N/A		Grass									N	Per ADAAG 810.2.1 Surface, bus stop boarding and alighting areas shall have a firm, stable surface. Per DCAB interpretive opinion 2011-02, grass is not a firm, stable surface.

Bus Stop #966
 (Hawaiian Beaches, Kahakai Blvd)
 Routes Served: 401



Sign					Amenities					Shelter Type	Shelter Manufacturer	Boarding Area				Bus Shelter				ADA-compliant?	ADA Evaluation If No, Why? ADAAG = American with Disabilities Act Accessibility Guidelines PROWAG = Public Right-of-Way Accessibility Guidelines (PROWAG still pending adoption)			
Red/ White	Blue Hele-On	Own Pole	Height (in) (80-in min.)	Protrusion (in) (4-in max.)	Bench	Bench Distance (ft)	Shelter	Trash Can	Recycle			Bike Rack	Ground Surface	Length (ft), 8' min.	Width (ft), 5' min.	Run Sl (slope of road)	Cross Sl (2.0% max.)	Ground Surface	Length (ft), 4' min.			Width (ft), 2.5' min.	Run Sl(2% max.)	Cross Sl (2% max.)
X	X		80	5	X	14	X				Window	Handi-hut	Paved	OK	OK	OK	OK	Concrete	OK	OK	OK	OK	Y	

Bus Stop #968
(Pahoa Puna Kai, Pahoa Village Road)
Routes Served: 40, 401, 402



Sign					Amenities					Shelter Type	Shelter Manufacturer	Boarding Area				Bus Shelter				ADA Evaluation				
Red/ White	Blue Hele-On	Own Pole	Height (in) (80-in min.)	Protrusion (in) (4-in max.)	Bench	Bench Distance (ft)	Shelter	Trash Can	Recycle			Bike Rack	Ground Surface	Length (ft), 8' min.	Width (ft), 5' min.	Run Sl (slope of road)	Cross Sl (2.0% max.)	Ground Surface	Length (ft), 4' min.	Width (ft), 2.5' min.	Run Sl (2% max.)	Cross Sl (2% max.)	ADA-compliant?	If No, Why?
					X	14	X	X	X		Wood/Ladder	Unknown	Paved	OK	OK	OK	OK	Concrete	OK	OK	OK	OK	Y	<p align="center">ADAAG = American with Disabilities Act Accessibility Guidelines PROWAG = Public Right-of-Way Accessibility Guidelines (PROWAG still pending adoption)</p>

Bus Stop #970
(Pahoa Elementary, Pahoa Village Road)
Routes Served: 40, 401, 402



Sign			Amenities					Shelter Type	Shelter Manufacturer	Boarding Area					Bus Shelter					ADA Evaluation				
Red/ White	Blue Hele-On	Own Pole	Height (in) (80-in min.)	Protrusion (in) (4-in max.)	Bench	Bench Distance (ft)	Shelter			Trash Can	Recycle	Bike Rack	Ground Surface	Length (ft), 8' min.	Width (ft), 5' min.	Run SI (slope of road)	Cross SI (2.0% max.)	Ground Surface	Length (ft), 4' min.	Width (ft), 2.5' min.	Run SI (2% max.)	Cross SI (2% max.)	ADA-compliant?	If No, Why?
X	X		90	5.5	X	6	X	X	X		Window	Handi-hut	Paved	OK	OK	OK	OK	Concrete	OK	OK	OK	OK	Y	<p align="center">ADAAG = American with Disabilities Act Accessibility Guidelines PROWAG = Public Right-of-Way Accessibility Guidelines (PROWAG still pending adoption)</p>

Bus Stop #971
 (Nanawale, Kehau Rd., front of Nanawale Community Association)
 Routes Served: 401



Sign				Amenities				Shelter Type	Shelter Manufacturer	Boarding Area				Bus Shelter				ADA Evaluation				
Red/White	Blue Hele-On	Own Pole	Height (in) (80-in min.)	Protrusion (in) (4-in max.)	Bench	Bench Distance (ft)	Shelter			Trash Can	Recycle	Bike Rack	Ground Surface	Length (ft), 8' min.	Width (ft), 5' min.	Run SI (slope of road)	Cross SI (2.0% max.)	Ground Surface	Length (ft), 4' min.	Width (ft), 2.5' min.	Run SI (2% max.)	Cross SI (2% max.)
							X				Gravel					Concrete	OK	OK	OK	OK	N	Per ADAAG 810.2.1 Surface, bus stop boarding and alighting areas shall have a firm, stable surface. Loose material such as gravel will not meet ADA requirements.

Bus Stop #975
 (Seaview Estates, Kalihikai Street)
 Routes Served: 401



Sign			Amenities				Shelter Type	Shelter Manufacturer	Boarding Area					Bus Shelter					ADA Evaluation					
Red/ White	Blue Hele-On	Own Pole	Height (in) (80-in min.)	Protrusion (in) (4-in max.)	Bench	Bench Distance (ft)			Shelter	Trash Can	Recycle	Bike Rack	Ground Surface	Length (ft), 8' min.	Width (ft), 5' min.	Run SI (slope of road)	Cross SI (2.0% max.)	Ground Surface	Length (ft), 4' min.	Width (ft), 2.5' min.	Run SI (2% max.)	Cross SI (2% max.)	ADA-compliant?	If No, Why? ADAAG = American with Disabilities Act Accessibility Guidelines PROWAG = Public Right-of-Way Accessibility Guidelines (PROWAG still pending adoption)
X			80	5.5			X				Wood/Ladder	Unknown	Paved	OK	OK	OK	OK	Concrete	OK	OK	OK	OK	Y	

Bus Stop #979
(Pahoa, Pahoa Village Road, front of Pahoa 7-11, northbound)
Routes Served: 401



Red/ White	Sign				Amenities					Shelter Type	Shelter Manufacturer	Boarding Area					Bus Shelter					ADA Evaluation	
	Blue Hele-On	Own Pole	Height (in) (80-in min.)	Protrusion (in) (4-in max.)	Bench	Bench Distance (ft)	Shelter	Trash Can	Recycle			Bike Rack	Ground Surface	Length (ft), 8' min.	Width (ft), 5' min.	Run SI (slope of road)	Cross SI (2.0% max.)	Ground Surface	Length (ft), 4' min.	Width (ft), 2.5' min.	Run SI (2% max.)	Cross SI (2% max.)	ADA-compliant?
	X	X	80	5.5							N/A		Paved	5	OK	OK	OK					N	Per ADAAG 810.2.2 Dimensions, bus stop boarding and alighting areas shall provide a clear length of 8 feet minimum.

Bus Stop #980
 (Keaau-Paho Road, Puna Kai Shopping Center)
 Routes Served: 401



Sign					Amenities					Shelter Type	Shelter Manufacturer	Boarding Area					Bus Shelter					ADA Evaluation		
Red/ White	Blue Hele-On	Own Pole	Height (in) (80-in min.)	Protrusion (in) (4-in max.)	Bench	Bench Distance (ft)	Shelter	Trash Can	Recycle			Bike Rack	Ground Surface	Length (ft), 8' min.	Width (ft), 5' min.	Run SI (slope of road)	Cross SI (2.0% max.)	Ground Surface	Length (ft), 4' min.	Width (ft), 2.5' min.	Run SI (2% max.)	Cross SI (2% max.)	ADA-compliant?	If No, Why?
					X	12	X	X	X		Window	Handi-hut	Paved	OK	OK	OK	OK	Concrete	OK	OK	OK	OK	Y	ADAAG = American with Disabilities Act Accessibility Guidelines PROWAG = Public Right-of-Way Accessibility Guidelines (PROWAG still pending adoption)

Bus Stop #985
(Hawaiian Paradise Park, Makuu & 16th Ave.)
Routes Served: 402



Sign			Amenities					Shelter Type	Shelter Manufacturer	Boarding Area					Bus Shelter					ADA Evaluation			
Red/ White	Blue Hele-On	Own Pole	Height (in) (80-in min.)	Protrusion (in) (4-in max.)	Bench	Bench Distance (ft)	Shelter			Trash Can	Recycle	Bike Rack	Ground Surface	Length (ft), 8' min.	Width (ft), 5' min.	Run Sl (slope of road)	Cross Sl (2.0% max.)	Ground Surface	Length (ft), 4' min.	Width (ft), 2.5' min.	Run Sl (2% max.)	Cross Sl (2% max.)	ADA-compliant?
											Wood with Metal Roof		Grass				Concrete	OK	OK	OK	OK	N	Per ADAAG 810.2.1 Surface, bus stop boarding and alighting areas shall have a firm, stable surface. Per DCAB interpretive opinion 2011-02, grass is not a firm, stable surface.

Bus Stop #1080
 (Leilani Ave., nearside of Oneloa St.)
 Routes Served: 401



Sign			Amenities					Shelter Type	Shelter Manufacturer	Boarding Area					Bus Shelter				ADA Evaluation				
Red/ White	Blue Hele-On	Own Pole	Height (in) (80-in min.)	Protrusion (in) (4-in max.)	Bench	Bench Distance (ft)	Shelter			Trash Can	Recycle	Bike Rack	Ground Surface	Length (ft), 8' min.	Width (ft), 5' min.	Run Sl (slope of road)	Cross Sl (2.0% max.)	Ground Surface	Length (ft), 4' min.	Width (ft), 2.5' min.	Run Sl (2% max.)	Cross Sl (2% max.)	ADA-compliant?
											Wood with Metal Roof	Unknown	Grass									N	Per ADAAG 810.2.1 Surface, bus stop boarding and alighting areas shall have a firm, stable surface. Per DCAB interpretive opinion 2011-02, grass is not a firm, stable surface.